



**WATERPROOFING &
BUILDING PRODUCTS**



**COMMERCIAL
PRODUCT**

ArmorSheet 600 / 400

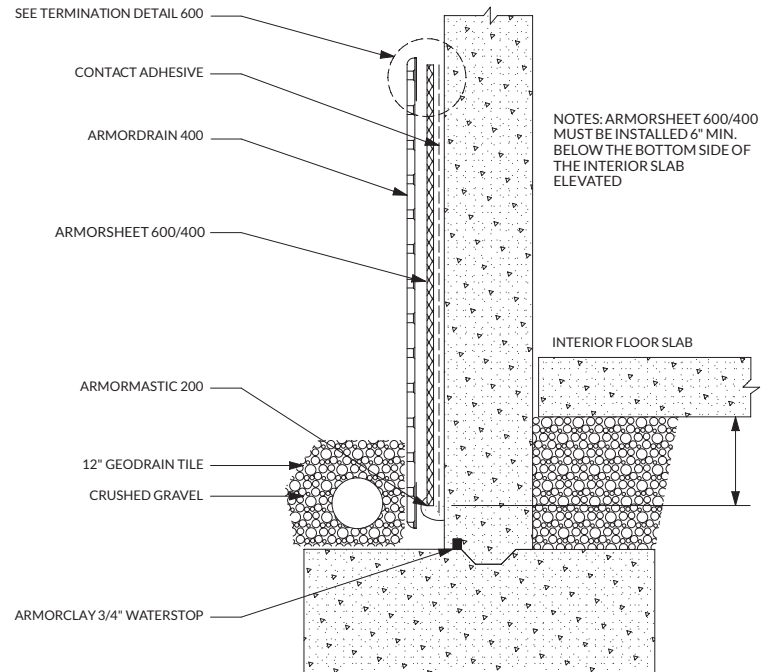
EXTERIOR ABOVE AND BELOW-GRADE COMMERCIAL SHEET WATERPROOFING SYSTEM

ArmorSheet™ products and accessories are a tested and proven solution for commercial waterproofing applications. This peel-and-stick waterproofing membrane is easy to handle, simple to apply and provides long-lasting protection. With all the benefits of factory-controlled properties and the waterproofing characteristics of asphalt, ArmorSheet™ is the easy choice for contractors and applicators alike.

ADVANTAGES:

- Industry leading product-rigidity gives unparalleled ease of install in tight spaces
- When combined with Armor Primer products, there is no stronger bond in the self-adhering asphalt sheet

Elevated Interior Slab



ArmorSheet 600

ArmorSheet 600 is a premium 60 mil prefabricated self-adhering sheet-type waterproofing membrane. It is comprised of a tough multi-layer cross-laminated film that is coated with a rubberized asphalt adhesive. A release liner protects the adhesive and is removed as the membrane is installed. ArmorSheet 600 is intended as a multi-purpose waterproofing membrane for use in sub-grade applications and under siding, exterior plaster, as a through wall flashing or anywhere it will be protected from long-term ultraviolet exposure. ArmorSheet 600 adheres aggressively to most clean, dry substrates including metal, wood vinyl, masonry, ICF foundations with a film/foil surface, and rigid insulation boards. ArmorSheet 600 may be used to waterproof foundations and other below grade structures, plaza decks, balconies, under siding, and exterior plaster. This premium system bonds to the substrate and self-seals around nails, staples and other fasteners to prevent damage caused by water penetration. ArmorSheet 600 sticks in cool weather to common building materials for ease of application and to eliminate movement of water under the membrane.

Roll size = 36" x 66.7' (200 sqft) Each or 25/Pallet

Product Description:

ArmorSheet 400

ArmorSheet 400 is an all-purpose 40 mil prefabricated self-adhering sheet-type waterproofing membrane. It is comprised of a high-tensile polyester film that is coated with a layer of specially formulated rubberized asphalt adhesive. A release sheet protects the asphalt and is removed as the membrane is installed. ArmorSheet 400 is engineered to be a multi-purpose waterproofing sheet suitable for use under siding and exterior plaster. ArmorSheet 400 adheres aggressively to most clean, dry substrates including metal, wood vinyl and masonry. The special ArmorSheet 400 polymer modified waterproofing compound self-seals around punctures such as nails, screws and staples. This all-purpose system bonds to the substrate and seals around fasteners to help prevent damage caused by water penetration.

Roll size = 36" x 75' (225 sqft) Each or 25/Pallet





COMPLETE COMMERCIAL SOLUTION



Product Application:

ArmorSheet membranes are used for vertical and horizontal waterproofing on structural foundation walls and decks. Below-grade foundation walls, tunnels, split slabs; plaza decks and parking decks are all areas where ArmorSheet may be applied. ArmorSheet may also be used in interior areas such as mechanical rooms, laboratories, kitchens and bathrooms. The combination of these two excellent waterproofing materials provides a high performance, extremely durable waterproofing barrier.

ArmorSheet 600

Product/Technical Data

Property	Method	Results
Color	—	Dark Gray/Black
Thickness	ASTM D1970	60 mils
Tensile MD/CMD	ASTM D882	21/28 lbf/in
Pliability	ICC-ES AC 38	Pass
Vapor Permeance	ASTM E96	0.1 perm /0.02 g/m ²
Low Temp. Flexibility/Nail Seal	ASTM D1970	Pass/Unaffected
Crack Cycling	ASTM C836	Pass/Unaffected
Soil Burial at 16 wks	GSA-PBS 07121	No effect
Water Resistance	ASTM D779	≥30 hr.
Temperature Application Range	—	≥35°F/1.7°C +
Roll Size/Information	—	36"x66.7' = 200 sqft 25 Rolls/Pallet 65 lbs/Roll

ArmorSheet 400

Product/Technical Data

Property	Method	Results
Color	—	Dark Gray/Black
Thickness	ASTM D3767	40 mils
Tensile MD Tensile CMD	TN-07	34.5 lbf/in 43.5 lbf/in
Elongation MD Elongation CMD	TN-07	160% 109%
Low Temp. Flexibility	ASTM D1970	Pass/Unaffected
Crack Cycling	ASTM C836	Pass/Unaffected
Adhesion in Peel	PA180-05	18.5 lbf/in@73°F
Water Absorption	ASTM D570	0.18% by wt
Temperature Application Range	—	≥35°F/1.7°C +
Roll Size/Information	—	36"x 75' = 225 sqft 25 Rolls/Pallet 59 lbs/Roll

Limited Warranty

Mar-flex warrants its products will be delivered free of defects in materials and workmanship. Mar-flex will replace the material or refund the purchase price. Mar-flex makes no other warranty, including an implied warranty of merchantability or fitness for a particular purpose. Mar-flex shall not be liable for any other loss or damage. Contact Mar-flex to discuss specific details for extended warranty periods.

HEALTH AND SAFETY INFORMATION IS GIVEN IN THE SAFETY DATA SHEET (SDS) AND THE PRODUCT DATA SHEET AVAILABLE FOR THIS PRODUCT. THESE SHOULD BE READ AND UNDERSTOOD BEFORE USING THIS PRODUCT.

Order Today! Contact Mar-flex for the dealer nearest you. 800-498-1411 | 513-422-7285 | Fax 513-422-7282 | Mar-flex.com

©2020 Mar-flex Waterproofing & Building Products. All rights reserved.

OTP 8/2020 | 1500