



**WATERPROOFING &
BUILDING PRODUCTS**



**RESIDENTIAL
PRODUCTS**



**COMMERCIAL
PRODUCTS**

RESIDENTIAL

COMMERCIAL

RESIDENTIAL & COMMERCIAL PRODUCTS CATALOG



**Taking the "LEED" on a greener approach
to Residential and Commercial Foundation
Waterproofing, Drainage, Insulation and
Building Products**

Mar-flex Waterproofing Products

Product Catalog

Table of Contents/Water-Based Products Expiration Date/Return Policy

Residential & Commercial

Mar-flex Residential 3 Step System	3
Residential Dampproofing	4
Residential Fusion Dampproofing & Waterproofing Products	5
Commercial Dampproofing/Vapor/Air Barriers/ Accessories	6-7
Residential Waterproofing / Mastic	8-11
Commercial/Residential Masonry Sealer	12
Commercial Waterproofing (Spray,Sheet,Bentonite,Hot Melt)	12-17
Commercial/Residential Drainage & Insulation Boards	18-23
Commercial/Residential Drainage Tile	24-25
Commercial Drainage Mats	26
Residential Egress Window Wells/ Vent Wells	27-29
Residential Standard Window Wells	30

Concrete Products

Control Joint Systems/Foundation Vents	31
Sump Pump Products	32
Crack Injection Products	33-35

Equipment / Accessories

Material Handling/Spray Accessories & Kits/ Hoses & Tips	36-43
--	-------

Contractor Supplies

Safety & Protective Equipment	44-45
-------------------------------------	-------

Freight Information/Credit

Terms/Return Policy	46
---------------------------	----

Order Form	47
------------------	----

Expiration Date

(Water-Based Products)

The date is meant to be a "best when used by" date to aid you in rotating stock. The (6) month shelf life is a general guideline and is not meant to imply that the material is not saleable at this date. If the product is stored according to our specifications and has exceeded the 6 month guideline, it should be visually inspected to ensure its saleable condition.

Batch Dating:

The first two numbers represent product type.

- 01 Mar-flex 5000 WB
- 02 QuickSeal WB
- 03 Basix WB
- 04 Dampproofing WB
- 10 FUSION UV WB
- 13 DampFUSION WB
- 14 LiteFUSION WB

The last six numbers represent the date packaged:

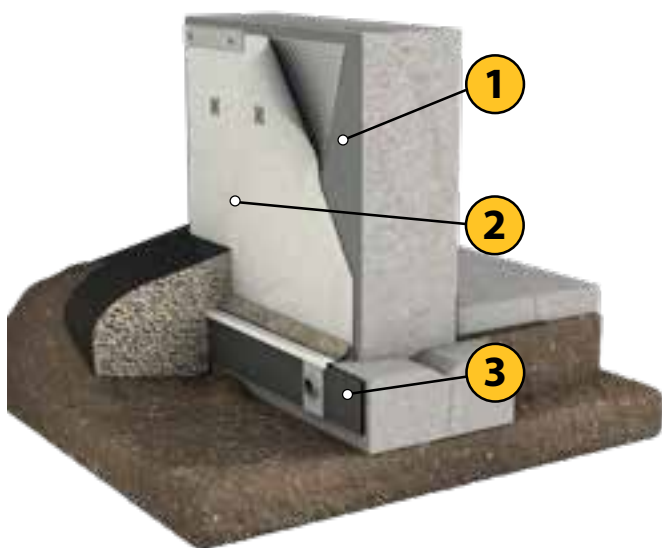
Example: 02071516 (02 - 07/15/16) represents QuickSeal packaged on July 15, 2016

Return Policy

We will normally accept returned products under the following conditions:

- Prior written authorization including RGA number from Mar-flex is obtained
- The products are returned within 30 days from the original date of the invoice
- The products are in new and saleable condition
- A 25% restocking fee plus freight will be added on all returns
- Returns not accepted on electrical replacement parts

The Mar-flex Residential 3 Step System



Waterproofing: The Mar-flex 3-Step System

Mar-flex developed its 3-step system to protect the poured foundation wall of a home and eliminate the devastating effects of water – including mold and mildew. The result? Decades of dry, worry-free lower level living.

- 1 Waterproofing membrane seals wall**
First, a highly-impermeable membrane is applied to the exterior concrete walls. This specially formulated spray coating is the first line of defense in sealing water out of the basement.
- 2 Drainage board protects and insulates wall**
After the membrane is applied, a high-quality drainage board is installed to protect the coating, while helping channel water away from the home's foundation.
- 3 Drainage tile transports water away from foundation**
Finally, drainage tile is installed along the footer/foundation walls to channel water into the sump/drainage system and transport water away from the basement.

1



Dampproofing



Basix™



QuickSeal™



Mar-Flex 5000™



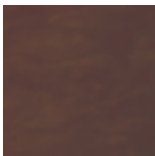
2



ShockWave



Geo-Mat/
Geo-Mat PLUS



Drain & Dry Board
with
Ecos Technology



FiberDrain



NeoFoam

3



Mar-flex Geo Drain Tiles



Waterproofing
and Building
Products

Residential

Foundation Dampproofing

Dampproofing & Foundation Coating Water-Based



Application

Application will depend on condition and porosity of surface to be coated. Dampproofing applications should be made at a rate of approximately 2 gallons/100 ft.². This product should be applied as received. Keep container covered when not in use. Material should be spray applied with a suitable airless spray equipment. Application may also be accomplished manually with a brush or roller. See installation instructions for complete details.

Code Compliance

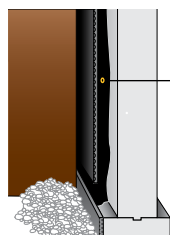
Mar-flex Dampproofing complies with ASTM D 1227-95, Type 2, Class 1 and ASTM D 1187, Type 1.

Mar-flex Dampproofing Water Based is a heavy-bodied asphalt emulsion protective coating used when dampproofing is required. It forms a smooth, tough, almost rubber-like film when dry. Mar-flex Dampproofing has moderately good resistance to temperature changes, is flexible at low temperatures, has excellent weatherability and resists water penetration.

The durable film bonds to most clean, dry and firm surfaces. All surfaces to be coated must be clean, dry, sound; free from oil, grease, rust, scale, loose paint and dirt. Mar-flex Dampproofing is compatible with Mar-flex Drainage and Insulation Boards.

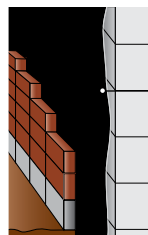
Uses

Mar-flex Dampproofing is recommended for dampproofing below-grade, vertical basement walls of poured concrete or unit masonry construction. It serves as a vapor barrier on the exterior face of the interior walls of above-grade exterior masonry cavity walls. It also excels as a utility coating on posts, pilings and other metal surfaces set into the ground.



Mar-flex
Dampproofing

Below-Grade
Application



Mar-flex
Dampproofing

Above-Grade
Application



BGD-36120
5 Gallon Bucket



BGD-36125
55 Gallon Drum
Each or 4/Pallet



BGD-36123
330 Gallon Tote



BGD-36129
6,000 Gallon Bulk

Dampproofing & Foundation Coating Solvent-Based

Mar-flex Dampproofing Solvent Based is a heavy-bodied cutback asphalt protective coating used when lower temperature application dampproofing is required. It forms a smooth, tough, almost rubber-like film when dry. Mar-flex Dampproofing has moderately good resistance to temperature changes, is flexible at low temperatures, has excellent weatherability and resists water penetration. The durable film bonds to most clean, dry and firm surfaces. All surfaces to be coated must be clean, dry, sound; free from oil, grease, rust, scale, loose paint and dirt. Mar-flex Dampproofing & Foundation Coating is compatible with Mar-flex Drainage and Insulation Boards.

Uses

Mar-flex Dampproofing is recommended for dampproofing below-grade, vertical basement walls of poured concrete or unit masonry construction. It serves as a vapor barrier on the exterior face of the interior walls of above-grade exterior masonry cavity walls. It also excels as a utility coating on posts, pilings and other metal surfaces set into the ground.

Application

Application will depend on condition and porosity of surface to be coated. Dampproofing applications should be made at a rate of approximately 2 gallons per 100 ft.². This product should be applied as received. Keep container covered when not in use. Material should be spray applied with a suitable airless spray equipment. Application may also be accomplished manually with a brush or roller. See installation instructions for complete details.



BGD-36115
55 Gallon Drum
Each or 4/Pallet



BGD-36118
6,000 Gallon Bulk

DampFUSION™ Water Based Dampproofing



Mar-Flex DampFUSION Water Based

Mar-flex DampFUSION is an excellent water-based acrylic dampproofing membrane approved for masonry, block, pre-cast and poured concrete wall foundations. It will stop water vapor and protect against leaks.

Mar-flex DampFUSION is a spray-on membrane, so it dries as a seamless, monolithic coating. It can be applied to pre-existing damp walls and the top of the foundation wall. It has no odor and will dry to a gray color to blend with the color of concrete. DampFUSION is compatible with Mar-flex drainage and insulation boards.



RWD-01-5
5 Gallon Bucket



RWD-01-55
55 Gallon Drum
Each or 4/Pallet

Dampproofing is often confused with waterproofing. Dampproofing simply slows down water penetration but does not completely waterproof a foundation. It is generally very effective in stopping water vapor transmission.

LiteFUSION™ Water Based Waterproofing

LiteFUSION Water Based

Mar-flex LiteFUSION is an economical water-based acrylic waterproofing membrane for use when hydrostatic pressure exists. It has the ability to bridge cracks that might later develop in a foundation, and can protect from the dangers of moisture, which can cause mold and mildew.

Mar-flex LiteFUSION is specifically designed for waterproofing pre-cast, poured and masonry foundation walls. Mar-flex Lite FUSION is a spray-on membrane, so it dries as a seamless, monolithic coating. It has no odor and will dry to a gray color to blend with the color of concrete. LiteFUSION is compatible with Mar-flex drainage and insulation boards.

Unlike dampproofing, a waterproofing membrane is designed to stop water infiltration and be extremely effective when applied on the exterior of a foundation system.



RWW-01-5
5 Gallon Bucket



RWW-01-55
55 Gallon Drum
Each or 4/Pallet

FUSION UV™ Water Based Waterproofing

MEMBRANE/combined with BOARD gives you a longer WARRANTY

Fusion UV	None	20 years
Fusion UV	FiberDrain	Limited Lifetime
Fusion UV	Drain & Dry	Limited Lifetime
Fusion UV	NeoFoam	Limited Lifetime
Fusion UV	Shockwave	Limited Lifetime
Fusion UV	GeoMat+	Limited Lifetime

Fusion UV™ Water Based

Fusion UV™ is a 100% virgin polymer waterproofing membrane that can be applied to any foundation wall. Its formulation sprays easily, producing a flexible, seamless seal that resists freeze-thaw cycles. Fusion UV™ is available in UV resistant gray.

An industry-leading warranty

Use the chart below to select the system and warranty that best meets your poured wall waterproofing needs. Complete warranty and details available upon request.



RWW-02-05
5 Gallon Bucket



RWW-02-55
55 Gallon Drum
Each or 4/Pallet



ICC Code Compliant



Waterproofing
and Building
Products

Commercial

Exterior Commercial Vapor Barrier/Dampproofing

ArmorBlock Vapor Barrier/Dampproofing



**Water-Based – CMB-36120 (5gal)
CMB-36125 (55gal)
CMB-36127 (330gal)
CMB-36129 (6000gal bulk)**

ArmorBlock 361 WB is a commercial grade heavy bodied emulsion asphalt protective coating used when a VaporBarrier/Dampproofing is required.



Packaging

ArmorBlock 361 WB is available in 5-Gallon Buckets & 55-Gallon Drums, 330gal totes and 6000gal bulk.

Uses

ArmorBlock 361 WB membrane is recommended for dampproofing below-grade basement walls of poured concrete or unit masonry construction. It serves as a vapor retarder on the exterior face of the interior walls of above-grade exterior masonry cavity walls. It excels as a utility coating on posts, pilings and other metal surfaces set into the ground.

ArmorBlock 361 WB can be spray, brush or roll applied to any vertical or horizontal surface.

Accessories

ArmorBlock

ArmorMastic 200 Solvent-Based – ARMT-00200

ArmorMastic 200 is a heavy-bodied trowel grade coating. It is excellent for the patching tie holes, filling honeycombed areas in both rough and smooth masonry surfaces prior to application of a variety of Mar-flex Commercial Products.



Uses

Mar-flex's ArmorMastic 200 is the most versatile heavy-bodied trowel grade coating available. This product is excellent for patching tie holes, filling in honeycombed areas in both rough and smooth masonry surfaces, and surface flaws. ArmorMastic200 remains flexible during freeze-thaw cycles, and can be applied during any season. You can patch all outside below grade wall ties with AM200.

Can be used with a variety of Mar-flex Commercial Products including ArmorSheet, ArmorBlock 361 and ArmorMembrane 363 and the full Armor Series line.

Armor 700 Solvent-Based Primer – ASBP-70005

Armor 700 SB Primer is a solvent-based penetration asphalt primer used for the preparation of all types of surfaces previous to the application of sheet membranes and hot or cold asphalt where application temperatures of 20°F or more are present.

Uses

Designed for use as a prime coat for concrete, gypsum, masonry, brick and metal surfaces over which waterproofing asphaltic products are to be applied. This solution readily penetrates pores and seals dusty masonry surfaces to provide a firm base for such applications.



Armor 710 Water-Based Primer – AWBP-70105

The Mar-flex 710 WB Primer is water-based polymer modified primer for self-adhering membranes. The 710 WB Primer penetrates pores and dries fast to provide a tacky, firm substrate for adhesion of the membranes.

Uses

The 710 WB Primer is suitable for use over asphalt, wood, plywood, gypsum board and concrete surfaces.



Armor Air Barrier



CWAB-12005 (5gal)
CWAB-120055 (55gal)

1200p Liquid Applied Air Barrier

1200p Vapor Permeable, water-based, Liquid Applied AirBarrier is an acrylic membrane that cures to form a seamless membrane around the building envelope.

Uses

1200p is intended as a breathable air barrier for all types of cavity wall construction. condensation on in the wall assembly.



- Low Odor (water-based)
- Breathable - high water vapor-permeance
- Seals around penetrations and brick ties
- UV resistant

Accessories ArmorAirBarrier

ArmorFlash is designed to be used in conjunction with all Armor Series products.

CETS-0475 (4" x 75') CETS-1875 (18" x 75')
CETS-0675 (6" x 75') CETS-2475 (24" x 75')
CETS-1275 (12" x 75')

Rolls per box varies per size
4"-9 rolls, 6"-6 rolls, 12"-3 rolls, 18"-2 rolls, 24"- 1 roll

Uses

ArmorFlash Transition Strips are designed to be used as a surface transition strip with AirBarrier Assemblies.



Armor 1200 Primer Water-Based
CWPR-12205



Questions?
Call Mar-flex Today!

800 498 1411

Residential

Waterproofing/Mastic

Basix WB & SB Waterproofing/All Season Mastic

Basix WB & SB™

Basix Water Base & Solvent Base™ Waterproofing is a seamless modified polymer waterproofing membrane. Basix WB & SB offers the new homeowner an affordable alternative to upgrade from entry level waterproofing. It also provides them with peace of mind that their biggest investment is protected and they will have a safe and dry living environment.

Uses

Basix WB & SB are recommended for new construction waterproofing of all below-grade basement walls or poured concrete or unit masonry construction.

Mar-flex Basix WB & SB can be used as a spray only or as part of a system.

Two System Components

Mar-flex allows you to customize your waterproofing system by matching the right coating to the right board.

For drainage plus R-value:

Drain & Dry, FiberDrain, Shockwave 1' or 2' Boards, or NeoFoam

For drainage with no R-value:

Geo-Mat™



362 All Season Mastic

362 All Season Mastic is a heavy bodied trowel grade coating. It is excellent for patching tie holes, filling in honeycombed areas in both rough and smooth masonry surfaces.

- Remains flexible during freeze-thaw cycles
- Can be used during any season
- Ready to use
- Color – Black
- Consistency – Rubber coating
- ASTM D-4586 Type I
- ASTM D-3409

Actual coverage rate will vary depending on the thickness of product applied. All surfaces should be free from oil, grease, rust and any other debris. Can be trowel or hand applied over wall ties, honeycombs or any surface flaw. Remove below grade wall ties inside the basement and out. Patch all outside below grade wall ties with 362 Mastic.



BGW-36124
Water Base
55 Gallon Drum
Each or 4/Pallet



BGW-36125
Solvent Base
55 Gallon Drum
Each or 4/Pallet



BGW-36123
Water Base
330 Gallon Tote



BGW-36129 - Water Base
6000 Gallon Bulk

BGM-36205
5 Gallon Bucket



BGM-36201
1 Gallon Pail
(6 gal pack minimum)

Mar-flex QuickSeal™ Water Based Emulsion Waterproofing



QuickSeal™ Water Based

An affordable upgrade from entry level waterproofing, QuickSeal™ is a modified polymer emulsion membrane that can be applied to any foundation wall. Its special formulation produces a seal that prevents water from seeping through the walls.

An industry-leading warranty

Use the chart below to select the system and warranty that best meets your poured wall waterproofing needs. Complete warranty and details available upon request.

MEMBRANE/combined with BOARD gives you a longer WARRANTY		
QuickSeal	None	10 years
QuickSeal	FiberDrain	20 years
QuickSeal	Drain & Dry	20 years
QuickSeal	NeoFoam	20 years
QuickSeal	Shockwave	20 years
QuickSeal	GeoMat+	30 years

QuickSeal's special formulation produces a seal that prevents water from seeping through the walls.



BGW-36134
55 Gallon Drum
Each or 4/Pallet



BGW-36133
330 Gallon Tote



BGW-36139
6,000 Gallon Bulk

Mar-flex QuickSeal™ Solvent Based Waterproofing

QuickSeal™ Solvent Based

An affordable upgrade from entry level waterproofing, QuickSeal™ is a modified polymer membrane that can be applied to any concrete foundation wall. Its special formulation produces a seal that prevents water from seeping through the walls.

An industry-leading warranty

Use the chart above to select the system and warranty that best meets your poured wall waterproofing needs. Complete warranty and details available upon request.



BGW-36135
55 Gallon Drum
Each or 4/Pallet



ICC Code Compliant



Mar-flex 5000™ Water Based Emulsion



Mar-flex 5000™ Water Based

Years in development, this heavy-duty, elastomeric emulsion membrane can be applied to any wall foundation. Its special formulation sprays easily and predictably, producing a viscous, flexible, seamless seal that resists freeze-thaw cycles. The result? Homeowners no longer have to put up with wet basements.

An industry-leading warranty

Use the chart below to select the system and warranty that best meets your poured wall waterproofing needs. Complete warranty and details available upon request.

MEMBRANE/combined with BOARD gives you a longer WARRANTY			THICKNESS
Mar-flex 5000	None	15 years	
Mar-flex 5000	 FiberDrain	30 years	All sizes
Mar-flex 5000	 Drain & Dry	40 years 50 years 60 years	.75" 1.1875" 2.375"
Mar-flex 5000	 NeoFoam	40 years 50 years 60 years	1.0625" 2.1875" 3.1875"
Mar-flex 5000	 Shockwave	50 years 60 years	1" 2"
Mar-flex 5000	 GeoMat+	40 years	



ICC Code Compliant



BGW-36152
5 Gallon Bucket



BGW-36154
55 Gallon Drum
Each or 4/Pallet



BGW-36153
330 Gallon Tote



BGW-36159
6,000 Gallon Bulk

Mar-flex 5000™ Solvent Based

Mar-flex 5000™ Solvent Based

Years in development, this heavy-duty, elastomeric membrane can be applied to any concrete foundation wall. Its special formulation sprays easily and predictably, producing a viscous, flexible, seamless seal that resists freeze-thaw cycles. The result? Homeowners no longer have to put up with wet basements.

An industry-leading warranty

Use the chart above to select the system and warranty that best meets your poured wall waterproofing needs. Complete warranty and details available upon request.



BGW-36155
55 Gallon Drum
Each or 4/Pallet

Mar-flex 5000™ Solvent Based Trowel Grade

Mar-flex 5000 Solvent Based Trowel Grade

A single component, rubber reinforced asphalt that forms an elastomeric waterproof coating as well as an air barrier. The dried film cures to a tough 40-mil flexible finish and will resist variations in temperature and weather. When applied to interior above grade cavity wall structures, the protective coating helps to control moisture and inhibit air leakage in buildings as specified in several building codes. Mar-flex 5000 SB Trowel Grade has excellent resistance to acids, alkalies and salts in the soil and will not deteriorate.

Coverage approximately 10 square feet per gallon.

Uses

Mar-flex 5000 SB Trowel Grade is used as a waterproof coating on exterior above or below grade surfaces such as masonry, spray polyurethane foam, wood, stone, brick and concrete. It can also be used as an air barrier/vapor barrier when applied in exterior/interior above grade assemblies.



BGT-36515
5 Gallon Bucket

TopGun Water-Based Waterproofing Membrane



Description

The Mar-flex TopGun Water-Based Elastomeric Emulsion Exterior Below-Grade Waterproofing Membranes are tested and proven membranes that can be applied over almost any clean, dry, sound substrate. It features our highest Residential "Limited-Lifetime" warranty and is a waterproofing industry product leader.

Uses

TopGun WB is recommended for new construction waterproofing of all below-grade basement walls of poured concrete or ICF walls. TopGun WB can be used as a membrane spray only or as part of a system.

Leeds Data

Mar-flex TopGun WB membrane is considered a GREEN product and can be used toward LEEDS building credits.



BGW-36954
55 Gallon Drum
Each or 4/Pallet



BGW-36953
330 Gallon Tote



BGW-36959
6,000 Gallon Bulk

Mar-Flex TopGun Water-Based Spec Sheet		
Properties	Method	Results
Color		Black
Total Solids		78%
Application Method		Spray
Application Range		20° to 130° F
Elongation @ 73.4° F	(ASTM D-412 Method A)	4485% min.
Crack Bridging Ability	(ASTM C-836)	10 cycles; no failure
Wind Driven Rain Resistance to Hydrostatic Head Pressure	(Federal Spec TT-C-555B, Par 4.4.7 ASTM D5385)	No Water Infiltration Passed @6psi/13.9ft of head press.
Total Cure Time		24 hrs.
Weight/Gallon		7.5 lbs,
Coverage Rate		20-25-sqft/gal
Tensile Strength	(ASTM-C-719)	48 psi min.
Water Vapor Permeance/ Transmission	(ASTM E-96)	0.35 perms (g/h-sq.ft.-in.Hg) 0.11 (grains/sq.ft./h)
Mold Growth/Bacterial Attack		No Degradation
Membrane		60 mil wet thickness
Adhesion to Concrete		No Adhesion Loss

Commercial/Residential

Commercial Grade Fluid Applied Waterproofing/Masonry Sealer

ArmorMembrane

ArmorMembrane™ 363 WB

**Water-Based - BGC-36312 (5gal)
BGC-36314 (55gal)
BGC-36316 (330gal)**

ArmorMembrane 363 Water-Based Commercial Grade Waterproofing is a tested and proven membrane for commercial applications.

Features / Benefits

- Creates a seamless membrane
- Effectively coats rough and porous surfaces
- Safe, non-flammable and low odor
- Seals around fasteners



ArmorMembrane™ 363 SB

Solvent-Based - BGC-36315 (55gal)

ArmorMembrane 363 Solvent-Based Waterproofing is a tested and proven membrane for commercial applications.

Features / Benefits

- Creates a seamless membrane
- Effectively coats rough and porous surfaces
- Seals around fasteners



Accessories **ArmorMembrane**

ArmorMastic 200 Solvent-Based - ARMT-00200

ArmorMastic 200 is a heavy-bodied trowel grade coating. It is excellent for patching tie holes, filling in honeycombed areas in both rough and smooth masonry surfaces prior to application of a variety of Mar-flex Commercial Products.

Uses

ArmorMastic 200 is the most versatile heavy-bodied trowel grade coating available. This product is excellent for patching tie holes, filling in honeycombed areas in both rough and smooth masonry surfaces, and surface flaws. ArmorMastic 200 remains flexible during freeze-thaw cycles, and can be applied during any season. You can patch all outside below grade wall ties with AM200.



Can be used with a variety of Mar-flex Commercial Products including ArmorSheet, ArmorBlock 361 and ArmorMembrane 363 and the full Armor Series line.

Armor Masonry Sealer Commercial/Residential

ArmorMasonry Sealer™

ArmorMasonry Sealer – CWSS-0005

Mar-flex ArmorMasonry Sealer is a waterbase solution of Potassium Methyl Silanetriolate, developed to treat a wide range of masonry and stone surfaces and provide long lasting water repellency.

Uses

Imparts water repellency to a wide variety of substances by reducing water absorption into the substrate. Reduced spalling due to freeze-thaw and efflorescence, thereby increasing the life of the substrate. It's colorless and non-yellowing protection preserves the natural appearance of the substrate. Penetrating and breathable within a Low VOC formula. Nonflammable.

Packaging:
5-Gallon Bucket

ADVANTAGES:

- Water-based, low odor
- Ready to use
- V.O.C. Compliant
- Excellent beading for improved aesthetics
- Will not change the traction or skid resistance of a surface
- No color change; will not darken surface
- Strong chemical bond to the substrate
- Excellent vapor transmission
- Dries quickly, re-open to traffic in 1-2 hours
- Excellent alkali resistance



ArmorSheet Commercial/Residential Waterproofing



ASSM-39600

ArmorSheet 600 is a premium 60 mil prefabricated self-adhering sheet-type waterproofing membrane. It is comprised of a tough multi-layer cross-laminated film that is coated with a rubberized asphalt adhesive. A release liner protects the adhesive and is removed as the membrane is installed. ArmorSheet 600 is intended as a multi-purpose waterproofing membrane for use in sub-grade applications and under siding, exterior plaster, as a through wall flashing or anywhere it will be protected from long-term ultraviolet exposure. ArmorSheet 600 adheres aggressively to most clean, dry substrates including metal, wood vinyl, masonry, ICF foundations with a film/foil surface, and rigid insulation boards. ArmorSheet 600 may be used to waterproof foundations and other below grade structures, plaza decks, balconies, under siding, and exterior plaster. This premium system bonds to the substrate and self-seals around nails, staples and other fasteners to prevent damage caused by water penetration.



Packaging:

36" x 66.7' (0.91 m x 20.3 m)

200 sqft (18.5 m²)

72 lbs (32.7 kg)

Each or 25 rolls per pallet

USES / FEATURES

Foundation wall, floor and planter waterproofing, under stucco and at head, sill, chimney shoulder, pot shelves, parapets and pony walls. Use for sealing SIPS building panels and around doors, windows and other potential leak areas. Waterproofs ICF foundations that are coated with a film/foil surface, from damage. ArmorSheet 600 offers the contractor and property owner these extra features: Uniform thickness for dependable protection. Self-seals around fasteners including nails, staples and screws. High strength, high elongation, flexible – accommodates expansion and contraction of the substrates. Protects ICF foundations and insulation boards from damage during backfill. Outer film surface is compatible with most construction sealants. Eliminates leaks – multiple layers of protection seal out water. Rubberized asphalt won't crack or dry. Aggressively adheres – ArmorSheet 600 sticks in cool weather to common building materials for ease of application and to eliminate movement of water under the membrane.



ASSM-39400

ArmorSheet 400 is an all-purpose 40 mil prefabricated self-adhering sheet-type waterproofing membrane. It is comprised of a high-tensile polyester film that is coated with a layer of specially formulated rubberized asphalt adhesive. A release sheet protects the asphalt and is removed as the membrane is installed. ArmorSheet 400 is engineered to be a multi-purpose waterproofing sheet suitable for use under siding and exterior plaster. ArmorSheet 400 adheres aggressively to most clean, dry substrates including metal, wood vinyl and masonry. The special ArmorSheet 400 polymer modified waterproofing compound self-seals around punctures such as nails, screws and staples. This all-purpose system bonds to the substrate and seals around fasteners to help prevent damage caused by water penetration.



Packaging:

36" x 75' (0.91 m x 22.8 m)

225 sqft (20.9 m²)

59 lbs (26.7 kg)

Each or 25 rolls per pallet

USES / FEATURES

Uniform thickness for dependable protection. Self-seals around fasteners including nails, staples and screws. Compatible with most construction sealants and primers. Eliminates Leaks – multiple layers of protection seal out water. Rubberized asphalt won't crack or dry. Aggressively adheres to most clean, dry surfaces including metal, wood, vinyl and masonry for ease of application and to eliminate movement of water under the membrane.

Accessories ArmorSheet

Armor 700 Solvent-Based Primer - ASBP-70005

The Mar-flex 700 SB Primer is a solvent based penetration asphalt primer used for the preparation of all types of surfaces previous to the application of sheet membranes and hot or cold asphalt where application temperatures of 20°F or more are present.

It is especially designed for use as a prime coat for concrete, gypsum, masonry, brick and metal surfaces over which waterproofing asphaltic products are to be applied. This solution readily penetrates pores and seals dusty masonry surfaces to provide a firm base for such applications.

All surfaces to be primed must be dry and free from dust, dirt, oil, grease and any other foreign matter.



Armor 710 Water-Based Primer - AWBP-70105

The Mar-flex 710 WB Primer is water-based polymer modified primer for self-adhering membranes. The 710 WB Primer penetrates pores and dries fast to provide a tacky, firm substrate for adhesion of the membranes.

The 710 WB Primer is suitable for use over asphalt, wood, plywood, gypsum board and concrete surfaces.

All surfaces to be primed must be dry and free from dust, dirt, oil, grease and any other foreign matter.



**Waterproofing
and Building
Products**

ArmorClay Bentonite Waterproofing



ACBS-30600

ArmorClay 600 waterproofing membrane combines the thermal stability and high performance of a cross-laminated HDPE sheet with the long-term sealing of bentonite clay. Installation is fast and efficient - bonding tightly to the recommended Spray Adhesive. **NO NAILING IS REQUIRED.** It is non-toxic, fire resistant, and emits no solvents or VOC's. ArmorClay 600 will have unsurpassed life expectancy and provide waterproof protection equal to the life of the structure.

**Packaging:**

39" x 37' (0.99 m x 11.2 m)
120 sqft (11 m²) standard rolls.
72 lbs (32.7 kg)
Each or 25 rolls per pallet

Uses

Waterproofing membrane designed for use on below-grade or split-slab structures. It is excellent for use on poured and ICF foundation walls, tunnels, plaza and parking decks. It is designed for easy installation with ArmorClay Mastic Adhesive depending on the project.



ACBS-31000

A multi-layer waterproofing membrane consisting of bentonite, virgin high-density polyethylene, and a protective layer of non-woven polypropylene. The tough HDPE membrane provides the primary waterproofing envelope while the expandable bentonite clay provides the self-sealing reassurance under hydrostatic conditions. The polypropylene fabric protects the bentonite from exposure to inclement weather and direct installation of shotcrete.

**Packaging:**

42" x 21.5' (1.1 m x 6.6 m)
75 sqft (7 m²) standard rolls.
75 lbs (34 kg)
Each or 20 rolls per pallet

Uses

Waterproofing membrane is used on structures below grade and is especially effective where the water-proofing is applied before the walls or floor are poured. ArmorClay 1000 is effective for blindside installation such as lagging, under floors, and elevator pits or standard installations such as backfilled wall, decks/tunnels. It has outstanding performance when used under conditions of high water head pressure.



ACBS-31500

The ultimate multi-layered waterproofing system that has bentonite clay on both sides of virgin HDPE membrane and a thin scrim of polypropylene to protect the bentonite from exposure to the elements. This system will form waterproof barriers to both sides of the HDPE. It combines the swelling properties of Bentonite clay with the strength and protection of virgin HDPE sheets to form two layers of self-sealing waterproofing, for the toughest projects even under hydrostatic conditions. Because both Bentonite and the HDPE membrane are very stable, ArmorClay 1500 waterproofing will provide long-lasting protection for your building.

**Packaging:**

42" x 14.3' (1.1 m x 4.4 m)
50 sqft (4.6 m²) standard rolls.
75 lbs (34 kg)
Each or 20 rolls per pallet

Uses

Waterproofing membrane is used on structures below grade and is especially effective where the water-proofing is applied before the walls or floor are poured such as blindside installation lagging, under floors, and elevator pits. ArmorClay 1500 is also effective in combination with Mar-flex Neofoam Insulation in preventing water migration behind the insulation. It has outstanding performance when used under conditions of high water head pressure. Can be used as a complete system with many Mar-flex Commercial Drainage Boards and Mats as well.

ArmorClay Bentonite Accessories

Accessories ArmorClay



TieBack Cover – ACBS-27278

The ArmorClay Tieback Cone is a waterproof assembly made from ArmorClay1500, a 20-mil HDPE sheet with bentonite on both sides. The two-piece assembly (cone-shaped cover and a flange cover) is filled with ArmorClay Mastic to complete the waterproofing detail. The Cone is pre-assembled to provide a simple and quick waterproofing detail for tie-backs. The cone shape, flange cover, and mastic fill contribute to form a secure waterproof cover that is strong enough to withstand shotcrete, yet simple enough for field alterations. The ArmorClay Tieback Cone is designed for use with ArmorClay1000 and 1500 waterproofing systems. (Sold Individually)



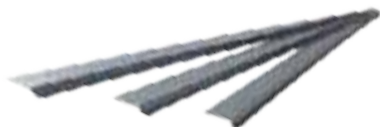
Granular Pack – ACBS-00030

Bentonite is volcanic ash that absorbs several times its weight in water, causing it to expand, and thus prevent further water penetration. ArmorClay Granular Packs are 30 lb. bags of premium granular bentonite for use as fill, a cant along horizontal-to vertical transitions, and other loose bentonite applications. The Granular Packs are designed to be more manageable for the applicator on the job site, with handle on the bag to make the bentonite easier to carry and apply. (Sold Individually)



Waterstop – 1/2"-ACBS-60550 / 3/4"- ACBS-60575

ArmorClay Waterstop is used to seal static construction joints in concrete footings, walls, floors, tunnels, parking and plaza decks and to prevent water migration. ArmorClay Waterstop has superior performance when used under conditions of extreme water head pressure. Standard rolls sizes are: 1/2" x 1" x 15' (1.27 cm x 2.54 cm x 4.6 m) & 3/4" x 1" x 15' (1.9 cm x 2.54 cm x 4.6 m) (Sold in 5 rolls per box quantities)



Termination Bar – GM-48280

Termination bar is a high strength vinyl/plastic strip designed for attaching and sealing ArmorClay membranes and drainage layers at their termination points. Termination bar is 2.5" wide, 6'6" long and edging for caulking and sealing. (Sold 50 per box)



Bitumen Tape – ACBS - 04100

ArmorClay Bitumen Tape consists of a 4-mil cross laminated HDPE sheet laminated to 26 mils of Butyl Rubber and release liner. Uses include: Protect seams of multiple ArmorClay waterproofing systems from fluid and vapor transmission. ArmorClay Bitumen tape may be used on all grade line termination. (Sold 6 rolls/case)



Seam Tape – ACBS-03180

ArmorClay Seam Tape is PVC-backed rubber-adhesive seam tape to protect the joint on ArmorClay waterproofing membranes. It forms a strong bond (25oz/in) and will simultaneously cover nail holes along the overlap. The tape will provide a contiguous surface after installation. The Seam Tape comes in rolls 3" wide x 36 yards long. (Sold 16 rolls/case)



Solvent-based Mastic - 2gal pail - ACBS-36202

5gal pail - ACBS-36205

Modified Bentonite Paste. (Pails sold individually)



Water-based Mastic Adhesive – 2gal pail – ACBS-68002

5gal pail – ACBS-68005

Waterbase acrylic mastic adhesive. (Pails sold Individually)

ArmorClay Bentonite Waterproofing



Use ArmorClay with Mar-flex commercial grade waterproofing products for unmatched protection and superior warranties.

Why Bentonite?

ArmorClay bentonite products and accessories are a tested and proven solution for commercial waterproofing applications.

Bentonite clay expands when wet, absorbing several times its weight in water and makes for a very stable, below-grade solution.

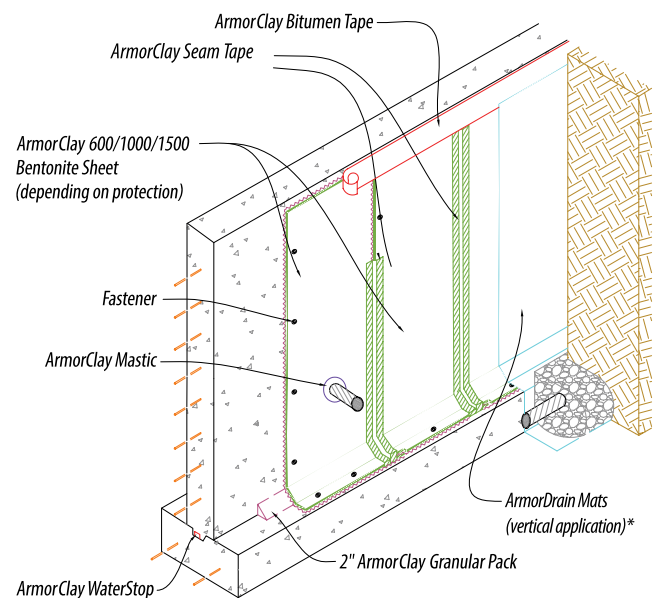


ADVANTAGES:

- Strong cross-laminated HDPE
- Self-sealing bentonite layer
- Easy installations with ArmorClay Adhesive
- Adhesion to concrete
- Adjustable placement
- Longevity: life of the structure
- No VOC—solvent free

ArmorClay Products:

- ArmorClay 600
- ArmorClay 1000
- ArmorClay 1500
- ArmorClay Bitumen Tape
- ArmorClay Granular Pack
- ArmorClay Mastic
- ArmorClay Mastic Adhesive
- ArmorClay Seam Tape
- ArmorClay Termination Bar
- ArmorClay Tieback Cone
- ArmorClay WaterStop



* For horizontal applications, use "C" Drain 400 Drainage Board

Exterior Commercial Hot Rubberized Applied Waterproofing Membrane

**AHRA-00050**

Mar-flex ArmorHRA 800 Hot Rubberized Applied Waterproofing Membrane is a single-component, rubberized asphalt compound that forms a tough, flexible, thick waterproof membrane.

ArmorHRA 800 is comprised of 24% pre-consumer material and can contribute toward LEED® credits in new construction. ArmorHRA 800 adheres to virtually any sound vertical or horizontal surface, to ensure water will not migrate beneath the membrane in the event of physical damage. The fast setup time speeds the completion of the waterproofing. ArmorHRA 800 Hot-Applied Liquid Membrane is applied in a thick, monolithic coating utilizing ArmorHRA 800 Reinforcing Fabric, which allows for a wide variety of substrate conditions. ArmorHRA 800 is used for waterproofing splitslab construction projects and is especially suited as the waterproofing membrane on roof decks using the inverted roof membrane assemblies and green roof systems

**PACKAGING**

ArmorHRA 800 is packaged in 50-lb. blocks, one block per carton, 48 cartons per pallet. Each block is sealed in a polyethylene bag inside the carton. The block, including the bag, is placed in the kettle, leaving only disposal of the carton.

The HRA 800 Reinforcing Fabric is packaged in rolls of 36"x360'. (1080 sqft). Approximate weight per roll-16lbs. Sold in Cartons of 4 rolls per Carton.

COVERAGE RATE

The following is a guide to estimate the amount of materials required for various membrane thicknesses. Approx: 11.39 lbs/gallon.

215 mils applied = 1.53 lbs/ft² = 7.5 ft²/gal

125 mils applied = 0.89 lbs/ft² = 13 ft²/gal

90 mils applied = 0.64 lbs/ft² = 18 ft²/gal

*Application temperature 350-400°F

SHELF-LIFE

When stored at temperatures between 40°- 100° shelf life is 12 months in the original, unopened container.

Accessories

ArmorHRA 800

ArmorHRA Fabric – AHRA-36360

Mar-flex ArmorHRA 800 Reinforcing Fabric is a 1.35 oz/sq yd spun bonded polyester, high strength material used to reinforce the Mar-flex HRA membranes in a variety of applications.

In addition, the 800 Reinforcing Fabric exhibits high resistance to splitting and cracking from thermal shock, low temperatures, freeze/thaw cycles, folding/creasing and rough handling. Unlike fiberglass, it is non-irritating to the skin.

**Armor 700 Solvent Based Primer – ASBP-70005**

The Mar-flex 700 SB Primer is a solvent based penetration asphalt primer used for the preparation of all types of surfaces previous to the application of sheet membranes and hot or cold asphalt where application temperatures of 20°F or more are present.

It is especially designed for use as a prime coat for concrete, gypsum, masonry, brick and metal surfaces over which waterproofing asphaltic products are to be applied. This solution readily penetrates pores and seals dusty masonry surfaces to provide a firm base for such applications.

All surfaces to be primed must be dry and free from dust, dirt, oil, grease and any other foreign matter



Waterproofing
and Building
Products

ShockWave™ Drainage & Insulation Board



Shockwave is the newest innovation in waterproofing. Designed as a superior drainage board with unsurpassed features that address the needs of applicators, builders and homeowners.

Shockwave is made of environmentally green closed-cell, cross-linked foam. Shockwave protects the wall and membrane during the backfill process with its CRM (crush resistant memory) which allows it to bounce back to its original configuration when compressed. Shockwave effectively channels water away from the foundation walls.



NEW
IMPROVED
PRODUCT



NEW PALLET INFORMATION

Product Specifications:	Size/Pc.	Pcs./Pallet	Ft. ² /Pallet	Drainage
1" Shockwave	1" x 3' x 4'	40	480	50/gal/hr/lin. ft.
2" Shockwave	2" x 3' x 4'	20	240	101/gal/hr/lin. ft.

1" Shockwave

1" Shockwave has 40 pieces per pallet that are 3' x 4'. Each pallet contains 480 square feet.

Sold by the pallet,

64 pallets/truckload.



DM-48325

2" Shockwave

2" Shockwave has 20 pieces per pallet that are 3' x 4'. Each pallet contains 240 square feet.

Sold by the pallet,

64 pallets/truckload.



DM-48350

GEO-MAT™ Products

Mar-flex GEO-MAT™ Products



Mar-flex Geo-Mat rolls are made of high density polyethylene (HDPE) which offers strong resistance to hydrostatic pressure and excellent drainage.

Mar-flex Geo-Mat rolls feature dimples that are aligned along vertical and horizontal axis to rapidly channel water from grade to the footer drainage system.

Geo-Mat or Geo-Mat Plus can be used as a foundation dampproofing as well as a sheet waterproofing material in certain instances. In areas where there is low hydrostatic pressure, for example when a drainage system is installed, the Geo-Mat products can be considered for use as a waterproofing membrane.

Geo-Mat is considered a GREEN product and can be used toward LEEDS building credits.

Mar-flex Geo-Mat accessories are available to professionally complete any job.

Material	Color	Roll Height	Roll Length	Compression Resistance	Drainage Capacity	Rolls/Pallet
Geo-Mat HC	Gray	4', 6'9", & 8'	50'	5515 psf.	18 gal/min/ft	12 Rolls
Geo-Mat Plus	Gray	4', 6', & 8'	50'	5515 psf.	18 gal/min/ft	9 Rolls

Mar-flex GEO-MAT™ HC

Mar-flex Geo-Mat HC is a high density, high compression polyethylene drainage roll used for dampproofing and sheet waterproofing. Stud shaped dimples provide an air chamber between roll and wall which keeps wall dry. Mar-flex Geo-Mat HC is resistant to saline solutions, alkalis and acids.

Roll Size: 4', 6'9" & 8' x 50' 200/337.5/400 sq. ft./roll Each or 12/Pallet



GM-48204 – 4'x50'
GM-48255 – 6.9'x50'
GM-48260 – 8'x50'



Mar-flex GEO-MAT™ Plus

Mar-flex Geo-Mat Plus is a high density polyethylene (HDPE) roll with an attached Typar geotextile. Mar-flex Geo-Mat Plus is placed polyethylene side against the waterproofing membrane allowing the filter mat to protect against back fill, soil sediment and obstructions.

Mar-flex Geo-Mat Plus is a protection and drainage roll used in conjunction with Mar-flex's waterproofing membranes to form one of Mar-flex's Waterproofing Systems.

Roll Size: 4', 6' & 8' x 50' 200/300/400 sq. ft./roll Each or 9/Pallet



GM-48274 – 4'x50'
GM-48272 – 6'x50'
GM-48270 – 8'x50'



Code Compliance

ICC Evaluation Service, Inc. (ICC-ES) has issued evaluation report ESR-3062 on the Mar-flex 5000™, Fusion™ and QuickSeal™ Waterproofing Membranes, Geo-Mat HC™ and Geo-Mat Plus™ Drainage Rolls. ICC-ES finds that, subject to the conditions set forth in ESR-3062, the membranes comply with the International Building Code (IBC) and the International Residential Code (IRC), or are suitable alternatives to what is specified in the codes.



Waterproofing
and Building
Products

GEO-MAT™ Products

Geo Clip

Geo Clip is designed to be used in conjunction with Mar-flex Geo-Mat and Geo-Mat Plus to speed installation. The Geo Clip's prongs help distribute weight to secure board after nail is inserted into preformed center nail hole.



GM-48277

Generally 80-100 clips used per 8'x 50' foot roll.

500/box

Termination Bars

Termination bars are designed to be used in conjunction with Mar-flex Geo-Mat & Geo-Mat Plus, or any other sheet products requiring termination bars. The termination bar protects the top edge of the product at grade level from soil penetration between roll and wall.



GM-48280

50 (6'6") Termination bar/box
325' per box

ArmorFlash

ArmorFlash 6" is designed to be used in conjunction with Mar-flex Geo-Mat during dampproofing applications. The ArmorFlash seals overlaps and other critical points on flat side of roll.



CETS-0675

Roll Size: 6" x 75'
6 rolls/box

Composite Drainage Mats

Mar-flex Armor Drain 110

Mar-flex Armor Drain 110 is a medium-duty dimpled core bonded to a single layer of non-woven filter fabric. Designed as a residential composite drainage system.



DP-48325

Roll Size: 4'x 50'
200 sq. ft./roll
Thickness: .40"



Each or 8/Pallet

Fasteners

Fastens product to surface, providing an additional bond until backfilled. May be installed into concrete with hammer.

- | | | |
|--------|--------------------|---|
| 1" | 500/box – AI-28132 | • Armor Drain 110/150 |
| 1-1/4" | 500/box – AI-28134 | • 3/4" Drain & Dry/FiberDrain Geo-Mat Products ArmorDrain 400 |
| 1-1/2" | 500/box – AI-28136 | • 1-3/16" Drain & Dry/FiberDrain |
| | | • 1" Shockwave GeoDrain Tile 6" & 12" |
| 2-1/2" | 500/box – AI-28138 | • 2-3/8" Drain & Dry/FiberDrain |
| | | • 2" Shockwave |

AI-28132



AI-28134



AI-28136



AI-28138



Questions?
Call Mar-flex Today!

800 498 1411

Drain & Dry Board with Ecosse Technology

Ecosse Drain & Dry Board™

Ecosse Drain & Dry Boards are made with Ecosse Technology that converts bio-based materials into an inert polymer that bonds mineral wool strands together, eliminating the formaldehyde and phenols found in traditional binders and insulations. The Drain & Dry Board comes in several sizes. These boards offer protection for the waterproofing or dampproofing membrane during backfilling operations, and offer good drainage properties and thermal insulation. Drain & Dry is also LEED accredited.

Ecosse Drain & Dry boards are compatible with any of the Mar-flex waterproofing or dampproofing membranes.

Ecosse Drain & Dry boards should be installed from the top of the footing to the grade line and are applied shortly after membrane application and before backfilling operations start.



Product Specifications:	Size/Bundle	Pcs./Bundle	Ft. ² /Bundle	R-Values	Drainage
3/4" Drain & Dry Board	3/4" x 3' x 4'	18	216	3.1	Up to 65 gal/hr/lin. ft.
1-3/16" Drain & Dry Board	1-3/16" x 3' x 4'	12	144	5.0	Up to 125 gal/hr/lin. ft.
2-3/8" Drain & Dry Board	2-3/8" x 3' x 4'	6	72	10.0	Up to 190 gal/hr/lin. ft.

3/4" Drain & Dry Board™

3/4" Drain & Dry Board has 18 pieces per bundle that are 3' x 4' with an R-Value of 3.1. Each bundle contains 216 square feet. Sold by the bundle, 232 bundles per truck load.

3/4"



DM-48200

1-3/16" Drain & Dry Board™

1-3/16" Drain & Dry Board has 12 pieces per bundle that are 3' x 4' with an R-Value of 5.0. Each bundle contains 144 square feet. Sold by the bundle, 232 bundles per truck load.

***Full truckloads only**

1 3/16"



DM-48225

2-3/8" Drain & Dry Board™

2-3/8" Drain & Dry Board has 6 pieces per bundle that are 3' x 4' with an R-Value of 10.0. Each bundle contains 72 square feet. Sold by the bundle, 232 bundles per truck load.

***Full truckloads only**

2 3/8"



DM-48250



Waterproofing
and Building
Products

Residential

Drainage & Insulation Board

FiberDrain Board

FiberDrain Board

Mar-flex FiberDrain Board is a economical alternative, semi-rigid board made from inorganic glass fibers; its unique design promotes effective water drainage while still retaining the board's R-Value.

The FiberDrain Board, when installed from the footing to the sill plate, addresses a major source of energy consumption; the conditioned but uninsulated basement and lower levels of a home. It also acts as a drainage medium to channel ground moisture away from the structure's foundation and into the building's drain tile system, while at the same time, protecting the Mar-flex waterproofing membrane, especially during backfilling and other construction activity.



Product Specifications:	Size/Bundle	Pcs./Bundle	Ft. ² /Bundle	R-Values	Drainage
3/4" FiberDrain Board	3/4" x 3' x 4'	64	768	3.1	Up to 74 gal/hr/lin. ft.
1.1875" FiberDrain Board	1.1875" x 3' x 4'	40	480	5.0	Up to 118 gal/hr/lin. ft.
2.375" FiberDrain Board	2.375" x 3' x 4'	20	240	10.0	Up to 237 gal/hr/lin. ft.

3/4" FiberDrain Board

3/4" FiberDrain Board has 64 pieces per bundle that are 3' x 4' with an R-Value of 3.1. Each bundle contains 768 square feet. Sold by the pallet, 64 pallets per truck load.

3/4"



DM-07534

1.1875" FiberDrain Board

1.1875" FiberDrain Board has 40 pieces per bundle that are 3' x 4' with an R-Value of 5.0. Each bundle contains 480 square feet. Sold by the pallet, 64 pallets per truck load.

***Full truckloads only.**

1.1875"



DM-11834

2.375" FiberDrain Board

2.375" FiberDrain Board has 20 pieces per bundle that are 3' x 4' with an R-Value of 10.0. Each bundle contains 240 square feet. Sold by the pallet, 64 pallets per truck load.

***Full truckloads only.**

2.375"



DM-23734

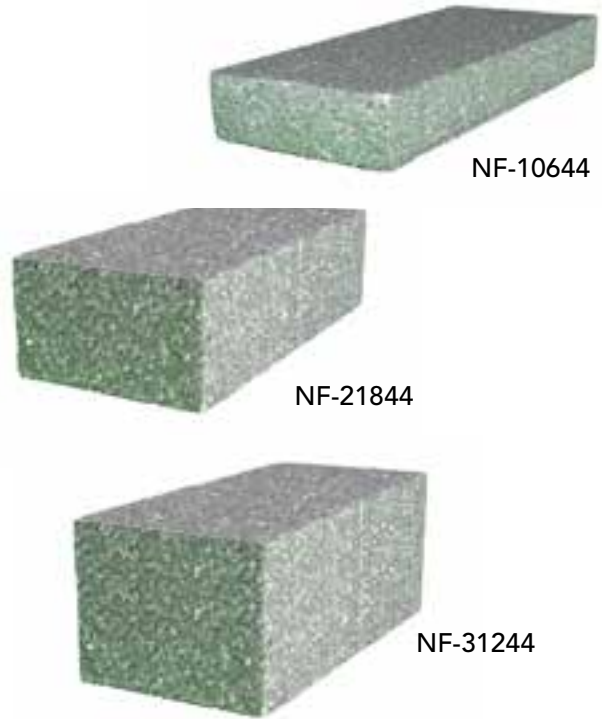
NeoFoam Insulation Board

Mar-flex NeoFoam

Mar-flex "NeoFoam" Insulation Board with *Neopor™ technology is a ASTM-C 518-04 expanded polystyrene foam board that has considerably better thermal insulation capacity than conventional EPS products. The insulating panels made of *Neopor™ are the solution for architects, contractors and builders alike. The high-tech *Neopor™ foam sets a new standard for insulating efficiency and environmental compatibility all while using far less product to achieve the same insulating effect.

(Sold in full truckload quantities only)

*BASF Trademark



Product	R-Value	Packaging Information
(NF-10644) 1.0625 NeoFoam Size/Pc 1.0625" x 48"x48"	R-5	88 Sheets / Pallet 1408 sq ft / Pallet 24 Pallet Full Truckload
(NF-21844) 2.1875 NeoFoam Size/Pc 2.1875" x 48"x48"	R-10	44 Sheets / Pallet 704 sq ft / Pallet 24 Pallet Full Truckload
(NF-31244) 3.1875 NeoFoam Size/Pc 3.1875" x 48"x48"	R-15	30 Sheets / Pallet 480 sq ft / Pallet 24 Pallet Full Truckload

*If flat bed, 22 Pallets Full Truckload. Also available in 36" x 48" and 48"x 96" Sheets

Geo Drain 12" Drainage Tile/Accessories

Mar-flex Geo Drain Tile 12"

Mar-flex Geo Drain Tile 12" is a three dimensional, high-flow, drainage core that is wrapped with a non-woven filter fabric. It is designed to replace conventional gravel covered pipe drainage around foundation and retaining walls. However, Mar-flex recommends gravel backfill in high silt/clay or sandy areas.

Each or 8/pallet or 7/pallet if LTL
Roll Size: 12" x 165' Thickness: 1"



DAP-52300



12" End Out Connector

A 12" end out connector is used to make the connection from Mar-flex Geo Drain 12" to a corrugated 4" plastic pipe.

10/box



DAP-52305

12" Side Out Connector

A 12" side out connector is used to make an in line connection of the Mar-flex Geo Drain 12" with a 4" outlet.

10/box



DAP-52310

12" Corner Connector

A 12" corner connector is used to connect two sections of Mar-flex Geo Drain 12" on either an inside or outside corner.

10/box



DAP-52320

12" Splice Connector

A 12" splice connector is used to connect two sections of the Mar-flex Geo Drain 12" either vertically or horizontally.

10/box



DAP-52325



Geo Drain 6" Drainage Tile/Accessories

Geo Drain 6" Tile

Mar-flex Geo Drain Tile 6" is a three dimensional, high-flow, drainage core that is wrapped with a non-woven filter fabric. It is designed to replace conventional gravel covered pipe drainage around foundation and retaining walls. However, Mar-flex recommends gravel backfill in high silt/clay or sandy areas.

Roll Size: 6" x 165' Thickness: 1"

Each or 16/Pallet or
15/Pallet if LTL



DAP-52200



6" Splice Connector

A 6" splice connector is used to connect two sections of the Mar-flex Geo Drain 6" either vertically or horizontally.

10/box



DAP-52220

6" End Cap

A 6" end cap is used to cover the cut end of the Mar-flex Geo Drain 6".

10/box



DAP-52225

6" End Out Connector

A 6" end out connector is used to make the connection from the Mar-flex Geo Drain 6" to a corrugated 4" plastic pipe.

10/box



DAP-52205

6" Step-down Connector

A 6" step-down connector is used to connect two sections of Mar-flex Geo Drain 6" on a vertical stepped foundation.

10/box



DAP-52230

6" Side Out Connector

A 6" side out connector is used to make an in line connection of the Mar-flex Geo Drain 6" with a 4" outlet.

10/box



DAP-52210

6" Corner Connector

A 6" corner connector is used to connect two sections of Mar-flex Geo Drain 6" on either an inside or outside corner.

10/box



DAP-52235

Commercial

Heavy Duty Horizontal and Vertical Drainage

Armor Drain



Vertical Mat – DP-48325

ArmorDrain 110 is an impermeable polymeric sheet that while under heat and pressure is formed into a dimpled drainage core. The core is then bonded to a single layer of non-woven filter fabric. The filter fabric retains soil and sand particles as well as freshly placed concrete or grout, allowing water to pass into the drainage core.



Purpose

ArmorDrain 110 is engineered to provide ample strength to protect waterproofing membranes against back fill soil and sediment and to provide excellent drainage capabilities providing hydrostatic relief.

AD 110 is ideal for basement foundations, retaining walls, planters or bridge abutments.

Advantages

- 11,000 psf of protection
- Resistance to hydrostatic pressure
- High flow dimpled drainage core
- Protects waterproofing membrane
- Easy installation



Horizontal and Vertical Mat – DP-48350

ArmorDrain 150 is an impermeable polymeric sheet that while under heat and pressure is formed into a dimpled drainage core. The core is then bonded to a single layer of non-woven filter fabric. The filter fabric retains soil and sand particles as well as freshly placed concrete or grout, allowing water to pass into the drainage core.



Purpose

ArmorDrain 150 is used as a protection and drainage roll and is engineered to provide ample strength to protect membranes against back fill soil and sediment and to provide excellent drainage capabilities.

Advantages

- 15,000 psf of protection
- Higher compressive strength for greater depth
- Strong resistance to hydrostatic pressure
- High flow dimpled drainage core
- Protects waterproofing membrane
- Easy installation



Horizontal Mat – DP-48375

ArmorDrain 400 is a heavy duty, high density polyethylene geonet drainage core. Its ridges are heat fused to a layer of non-woven filter fabric with an added layer of heavy duty grey fabric bonded to the back.



Purpose

ArmorDrain 400 is ideal under slabs, planters and roof gardens, retaining walls, foundation walls, and bridge abutments.

Because of the crush proof nature of the geonet, drainage composites can be used in the most extreme cases where heavy loads and/or heavy vehicular traffic are abundant.

Advantages

- 40,000 psf of protection
- Crush resistant
- Relieves hydrostatic pressure
- HDPE Geonet Drainage Core
- Protects waterproofing membrane
- Easy installation

Accessories ArmorDrain

GeoClip is designed to be used in conjunction with Armor Drain to speed installation. The Geo Clip's prongs help distribute weight to secure board after nail is inserted into preformed center nail hole.

GM-48277

500/box



Termination bars are designed to be used in conjunction with ArmorDrain. The termination bar protects the top edge of the product at grade level from soil penetration between roll and wall.

GM-48280

50 (6'6") Termination bar/box



RhinoWells Egress Window Wells



Patent Pending

RhinoWells Egress Window Wells meet basement building codes for below-grade living space egress and features a built-in stair design.

RhinoWells (Short)

74.25" Width x 43.5" Projection x 61" Height
Inside Width at Top 68.25"
Inside Width at Bottom 56"

*Installation hardware kit WW-44180 Sold Separately

*Must be used to validate warranty

Each or 6/pallet



Sandstone – WW-44110



Granite-WW-44115

RhinoWells Egress Window Well (Tall)

74.25" Width x 43.5" Projection x 81" Height
Inside Width at Top: 68.25"
Inside Width at Bottom: 56"

*Installation hardware kit WW-44180 Sold Separately

*Must be used to validate warranty

Each or 5/pallet



Sandstone – WW-44118



Granite-WW-44119

Accessories

Egress Window Well Cover

Egress clear covers are designed to fit all RhinoWells.

WW-44170



Steel Egress Window Well Grate

Steel Egress Window Well Grate easily secures to the top of the RhinoWells. Primer gray color to blend with well color.

WW-44176



Universal Egress Installation Kit

Hardware needed to install any of the egress window wells. Sold individually.

WW-44180



Waterproofing
and Building
Products

Residential

Egress Window Wells

Stonewells Stone Textured Window Wells



Mar-flex Stonewells™ are fitted with a simulated rock texture that looks and feels like real stone at a fraction of the cost. The built-in steps provide easy egress in case of a life threatening emergency.

75" Width x 49½" Projection at top x 64½" Height
66" Inside Width, 34" Inside Projection at bottom

- Fine stone texture
- Provides escape with built-in steps
- Meets building codes for below-grade living space egress
- Let in more natural light
- Accommodates 3-5' casement or slider windows
- One piece unit, no assembly required
- Dual wall design offers higher backfill rating
- Won't rust or dent like metal
- Enhances your homes value
- Optional Polycarbonate cover eliminates weeds, pests, and rainwater
- Maintenance Free
- Comes in two designer colors to coordinate with Mar-flex RhinoWells™

*Installation hardware kit
WW-44180 Sold Separately
*Must be used to validate warranty

Each or 6/Pallet



Back View



Speckled
Granite



Speckled
Sandstone



WW-44430



WW-44440

Stonewells Cover

Clear window well cover designed to fit Mar-flex Stonewells™ window wells.



WW-44450

DuraWells/ModularWells Modular Egress Window Wells

DURAWELLS

**NEW
PRODUCT**

Safe: Egress Code Compliant
Built-in steps every 12"
Durable: No Rust, Rot or Deterioration
Appealing: Real Stone Appearance
Easy Installation: Strong, Light-Weight Material,
One Piece Design
Available in 2 colors: Sandstone and Slate

Inside Width 70" Projection 40" Heights Shown Below
36" - (WW-45036/Sandstone) (WW-45136/Slate)
48" - (WW-45048/Sandstone) (WW-45148/Slate)
60" - (WW-45060/Sandstone) (WW-45160/Slate)
72" - (WW-45072/Sandstone) (WW-45172/Slate)
84" - (WW-45084/Sandstone) (WW-45184/Slate)
96" - (WW-45096/Sandstone) (WW-45196/Slate)

Egress Well Cover Clear: (WW-45000)
Egress Mesh Grate Copper Color: (WW-45001)
Egress Rebar Grate Copper Color: (WW-45002)
Gray Color Grates Available as Special Order

*Installation hardware kit WW-44180 Sold Separately
*Must be used to validate warranty



Available in 6 Heights
from 36" to 96"

Modularwells

Modularwells Modular Egress Window Well fits 32" to 48" wide slider or casement windows. The built in steps and ladder offer safe and easy exit from the basement. The lightweight, easy to handle modular design allows you to increase overall well height by adding additional modules in increments of 14". Mounting flanges (pre drilled) attach directly to the foundation. Well is made of polyethylene material with UV inhibitors and is resistant to weather conditions of freezing and thawing. Well is available in an attractive speckled earth tone color.

62" Width x 44" Projection x 21" Height
Each or 20/Pallet

*Installation hardware kit WW-44180 Sold Separately
*Must be used to validate warranty



WW-44905

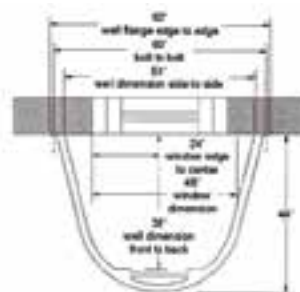
Accessories

Modularwells Well Cover

Window well cover designed to fit Modularwells Modular Egress Window Wells



WW-44925



Dimensions



Maximum stack 5 segments

Landscapes™ No-Maintenance Window Wells



Mar-flex Landscapes™ No-Maintenance Window Wells take lower level living to the next level with features designed to brighten your basement and increase the curb appeal of your home.

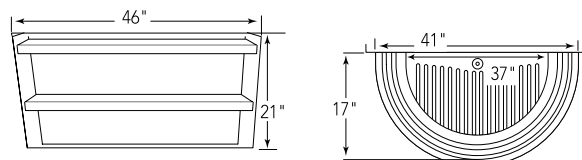
- Won't rust or dent like metal
- Features a built-in floor for maintenance-free construction
- Install easily - no specialty hardware needed
- Includes a drain kit

Landscapes™ well (Small)

46" Width x 17" Projection x 21" Height

Includes drain kit. Standard fasteners may be used for window well installation; no specialty hardware required.
Inside Width at Top: 41"
Inside Width at Bottom: 37"

Each or 25/Pallet



Sandstone – WW-42056

Granite – WW-42058

Landscapes™ well cover (Small)

Clear window well cover designed to fit Landscapes™ Window Well (Small).

Each or 4/box



WW-42140

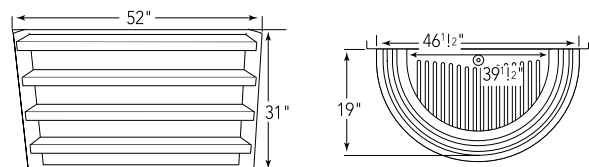
Landscapes™ well (Large)

52" Width x 19" Projection x 31" Height

Includes drain kit. Standard fasteners may be used for window well installation; no specialty hardware required.

Inside Width at Top: 46-1/2"
Inside Width at Bottom: 39-1/2"

Each or 20/Pallet



Sandstone – WW-42110

Granite – WW-42115

Landscapes™ well cover (Large)

Clear window well cover designed to fit Landscapes™ No-Maintenance Window Well (Large).

Each or 3/box

WW-42145



Mar-flex Control-Joint Systems/Foundation Vents



The **Mar-flex Control-Joint System** is designed to eliminate "Random Shrinkage Cracks" by creating vertical control-joints on both sides of the foundation walls. To ensure further protection, a watertight, outside control-joint is created when filled with Mar-flex Waterstop Elastomeric Sealant and protected by Mar-flex Fiberglass Fabric Reinforcement. Residential basements require foundation walls that are watertight and waterproofed. The Mar-flex Control-Joint System provides an economical, easy to use system for eliminating "Random Shrinkage Cracks" which are generally unavoidable, uncontrollable, unsightly and will leak water if not planned for ahead of time.



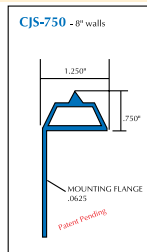
- Isolates shrinkage cracking and eliminates "Random Shrinkage Cracking"
- Reusable plastic extrusion, which easily attaches to the edge of any concrete forming system
- Installed in pre-planned locations in the foundation wall
- The "V" point creates "inducement" for shrinkage cracking in a vertical line
- Available in 4' and 5' lengths, with 2" mounting flange
- Pre-punched for easy use with different brands of forms

CJS-750 Control-Joint Extrusion

.750" Height for 8" wall thickness.
2" mounting flange. Includes 13 splice connectors.

25/box

CJS-42140 4' – 2" Flange
CJS-42150 5' – 2" Flange



Waterstop Elastomeric Sealant

Highly elastomeric, rubber reinforced asphalt based membrane/trowel grade. Elastomeric properties allow for expansion and contraction of the control-joint while maintaining watertight adhesion.



CJS-42500
12/1qt. cartridge/box



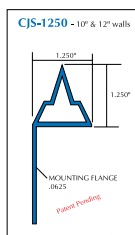
CJS-42505
5 gallon bucket

CJS-1250 Control-Joint Extrusion

1.250" Height for 10" and 12" wall thickness. 2" mounting flange. Includes 13 splice connectors.

25/box

CJS-42340 4' – 2" Flange
CJS-42350 5' – 2" Flange



Fiberglass Fabric Reinforcement

Designed to be used in conjunction with elastomeric sealant to provide additional reinforcement to protect against backfill damage and soil compaction.

12 rolls/box

CJS-42525



Welcome to the future of foundation ventilation – and possibly the last vent you will ever need.

VORTEX Manual Vent

Vent features easy-to-access controls that allow user to adjust airflow. Adjusts from 7.5 to 10 inches and fits 8, 9 and 10 inch walls, nominal or full size. Dimensions: 19-1/4" W x 11-1/4" H. Clear Vent Area-(CVA) 31.4 -Screen included.

Each or
60/Pallet



BCV-80150

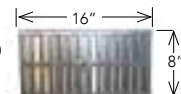


- Adjustable and telescopic for maximum versatility
- Less SKU/inventory headaches
- High-density polyethylene construction

Replacement Manual Vent Screen

Replacement manual screen fits BCV-80150

BCV-80200



Waterproofing
and Building
Products

Mar-flex Sump Pump Systems

Mar-flex Quality: Affordable, Durable, Flexible

We are proud to offer a complete sump pump system for your most demanding customer. Partnering with only the best component manufacturers available, we are presenting a unique product offering that is ready for purchase today!

SUMP PUMP FEATURES

- Automatic submersible cast iron sump pump
- Clog-resistant design capable of passing 1/2" diameter semi-solids
- Integrated snap-action float switch
- Professional grade shaft seal

SUMP WELL BASIN FEATURES

- An injection molded, polyethylene sump basin that offers a true 30 or 48 gallon capacity (varies by size)
- Ability to accept a variety of fittings and covers
- Versatile and flexible for the perfect basin for your installation

SUMP PUMP SPECS

Part #	HP	Volts	Discharge	Amps	Gallons Per Hour at Height					Shut Off	Cord
					0'	5'	10'	15'	20'		
SP-33013	1/3	115	1-1/2"	5	3420	3200	3000	2500	1100	28'	10'

PUMP DETAILS

1/3 HP
3420
GPH



SUMP WELL BASIN SPECS

Part #	Internal Diameter x Height (in)	Capacity (Gallons)	Weight (Pounds)	Wall Thickness (US inch)	Dimensions (in)			
					A	B	C	D
SP-38000	18"x30"	30	8.5	0.188"	30"	21"	17.94"	15.75"
SP-24240	24"x24"	48	22	0.250"	25.625"	24"	24"	22.25"

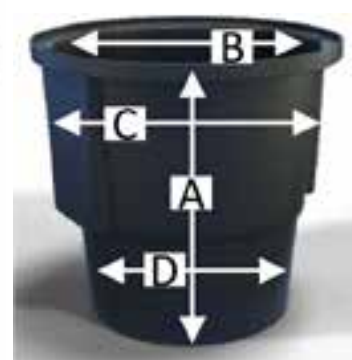
Clear/Black Cover
for 18" Pit
SP-80320



Steel Cover
for 24" Pit
SP-80324



SP-24240



SP-38000

Crack Injection & Repair Kits

30' Refillable Contractor Crack Injection Start Up Kit

Start-up kit provides basic materials and supplies for repair of cracks of approximately 30 lineal feet.

Kit Contents:

- IAT-64114 - Dual Cartridge Crack Injection Gun (1)
- IA-68160 - Quick Set Surface Port Paste (3)
- IA-68100 - Quick Foam Fine (3)
- IA-68168 - Quick Set Urethane Adhesive (1)
- IA-68180 - Static Mixers (3)
- IA-68210 - Retaining Nuts (3)
- IA-68280 - Universal Surface/Corner Mounts (50)
- IA-68220 - Quick Hose Injection Assembly (4) Safety Goggles (1)
- Gloves (5 Pair) Plastic Trowel (1) Wire Brush (1)
- Tool Box (1)



IAT-64100

Single Use Crack Repair Kit (Polyurethane/Epoxy)

The Polyurethane kit includes the materials and accessories for low-pressure injection and repair of approximately 6-8 lineal feet. (Up to 6' for the Epoxy kit)

- Mar-flex Port Paste (1 jar 8oz. Part A, 1 jar 8oz. Part B)
- Wooden Sticks (2) Surface Ports and Caps (12)
- Mar-flex Injection Polyurethane/Epoxy Resin 1:1 (2 single cartridges) 3/8":24 Mixing Nozzles (2) Injection Hose Assembly with plastic shut-off valve (1) Latex Gloves (2 Pair)
- Plastic Trowel (1) Goggles (1)
- Wire Brush (1) Drop Cloth (1)
- Tool required: Standard Single Cartridge Caulking Gun



IAT-64250 Polyurethane Repair Kit - 6' to 8'
*IAT-64255 Epoxy Repair Kit - up to 6'
*Special Order Only

Stitch Kit - Single/Triple

Mar-flex Grids (Stitch Kits) are a pre-impregnated, bidirectional carbon fiber grid for use as a near surface reinforcement for crack stitching and strengthening of concrete foundation structures. The grids are installed using Mar-flex resin to form a carbon fiber reinforced polymer system.

Uses

- Structural Retrofit & Upgrades
- Crack reinforcement & strengthening (increasing service life)
- Use on concrete foundation walls and floors

The Single | Stitch Kit includes:

- (10) Carbon fiber stitches
- (1) Tubeset of hi-mod gel
- (2) Green sulzer mixers

The Triple | Stitch Kit includes:

- (30) Carbon fiber stitches
- (3) Tubeset of hi-mod gel
- (6) Green sulzer mixers

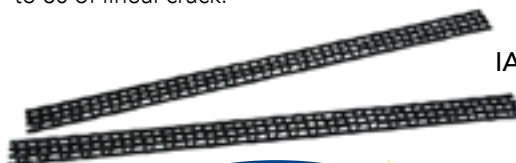
*Dual Cartridge Gun Required.

The Single - Stitch Kit is designed to reinforce up to 10' of lineal crack.

IA-68166

The Triple - Stitch Kit is designed to reinforce up to 30' of lineal crack.

IA-68167



Waterproofing
and Building
Products

Concrete Repair

Crack Injection Urethanes & Injection Epoxies

Urethanes

Quick Foam Fine Urethane (2 Part)

Quick Foam Fine is a hydrophobic polyurethane liquid with a 600 cps. Designed for water infiltration or ex-filtration. Cartridges contain product and catalyst that once introduced to water, reacts forming a closed cell barrier that prevents water infiltration. Designed to be used on cracks that are hairline and larger.

6 (1:1 cartridges)/box
Mixing nozzle IA-68180, and
retaining nut IA-68210 recommended



IA-68100

Quick Foam Broad Urethane (1 Part)

Quick Foam Broad is a hydrophilic polyurethane liquid with a 100 cps. Designed for water infiltration or ex-filtration. The dual cartridge comes with one side empty. Water is placed in the empty side and then when mixed with water, the product reacts within 30 seconds, creating a closed cell-barrier that prevents water infiltration. Best suited for cracks that are 1/8" or wider which are actively leaking.

6 (1:0 cartridges)/box
Mixing nozzle IA-68180, and
retaining nut IA-68210 recommended



IA-68120

Port Paste/Epoxies

Quick Set Surface Port Paste

Quick Set Surface Port Paste is a 2 component smooth epoxy adhesive designed to seal the surface of a crack and to attach ports to masonry surfaces.

6 (1:1 cartridges)/box



IA-68160

Quick Set Surface Seal & Peel

Quick Set Surface Seal & Peel is a two component, solvent free, paste adhesive. It is used as a fast-curing removable surface sealer and to attach ports in epoxy and urethane foam crack repair. Cured product does not require sanding or grinding for removal from the wall.

6 (1:1 cartridges)/box



IA-68165

Low Viscosity Epoxy Crack Filler

Low viscosity & moisture insensitivity makes this an excellent product for the injection of dry or damp cracks. With a 200 cps it is designed for cracks that are hairline and larger.

8 (2:1 cartridges)/box

Mixing nozzle IA-68190, and retaining nut
IA-68210 recommended



IA-68140

*Anchor Epoxy

High strength, fast setting, 2-component epoxy adhesive. 100% solids. Ideal for anchoring bolts, dowels and reinforcing rebar in concrete.

12 (1:1 cartridges)/box

12 static mixing nozzles and
retaining nuts included.



*IA-68170

*Special Order Only



Injection Ports & Accessories

Universal Surface/Corner Mounts

Mounts are designed for surface/corner mounted low pressure crack injection. Surface/corner ports are suitable for both epoxy and urethane materials. Flush mounts to both flat and corner concrete surfaces.



250/box

IA-68280

1/4" : 24 Quick Mix Static Mixer

Static mixers designed to be used with cartridge systems. Recommended to be used with Quick Foam Fine (IA-68100), Quick Foam Broad (IA-68120)

24/box



IA-68180

1/4" : 32 Quick Mix Static Mixer

Static mixers designed to be used with cartridge systems. Recommended to be used with Low Viscosity Epoxy Crack Filler (IA-68140).

24/box



IA-68190

Retaining Nuts

Threaded nuts to hold mixing nozzle onto dual cartridge during crack injection process.

10/bag



IA-68210

Flexible Quick Hose Injection Assembly

Flexible hose assembly to get to those hard to reach injection ports. One end connects to mixing nozzle, other end attaches to port. Can be used with either epoxy or urethane materials.

10/box

IA-68220



Low-Pressure Drill-In Port

Designed to be used on hairline and actively leaking cracks. Suitable for use with static mixers. Length is 3-3/4". Requires a 5/8" diameter drilled hole. Internal ball bearing prevents back-flow of material during injection.



IA-68230

Dual Cartridge Crack Injection Gun

Easy front loading with rear tube seals to prevent leaking. Kit included to convert gun from 1:1 to 2:1 applications.



IAT-64114

Putty Knives

1-1/2" plastic, disposable putty knives. Ideal for hand mixing and applying surface port paste.

25/box

IAT-64210



Stir Dish

Clear stir dishes, suitable for mixing surface port paste.

200/box

IAT-64215



Wall Preparation Brush

Composite handle wire brush removes loose and scaled material from both smooth and rough masonry surfaces.

IAT-64225



Hypo-Allergenic Gloves

Ambidextrous, disposable latex gloves ideal for use with Crack Injection materials. 6 mil Nitrile

100 pieces/box

IAT-64240



Waterproofing
and Building
Products

Equipment

Spray Guns/Accessories

Spray Guns/Accessories

Titan RX-Apex Spray Gun

Titan RX-Apex High Pressure Airless Spray Gun with working pressure of 5000psi and built in swivel.

SA-08020



Pump Lubricant

Lubrication for center shaft piston for all spray equipment & 1:1 Fast Flo® pump. Helps to prevent material from adhering to the pump piston rod.

8 oz. bottle



MI-12350

High-Pressure Hose Reel Swivel

Connects hose to electric hose reel to prevent kinks in hose; swivels 360°.



MI-12420

Spray Wand/RAC Housing & Tip



Spray Gun Set-Up with Standard Swivel



Spray Gun/Extension



Spray Accessories

Spray Gun Set up with a "Z" Swivel



Gun Wand Extension 10"

An industry standard, extension designed to be used in conjunction with spray guns and Reverse-A-Clean™ housing and tips.



Gun Wand Extension 40"

An industry standard, extension designed to be used in conjunction with spray guns and Reverse-A-Clean™ housing and tips.



High Pressure Spray Wand 86"

Custom applicator wand designed for ease of application of waterproofing products. High pressure wand with ball valve release. Accepts a variety of tips for different viscosity materials. Made to use with Reverse-A-Clean™ housing and tip which are not included.



Gun Wand Extension 60"

An industry standard, extension designed to be used in conjunction with spray guns and Reverse-A-Clean™ housing and tips.



78" Wand Grip and Tube

This 78" wand is the replacement tube for the 86" high-pressure spray wand.



Angle Spray Nozzle Kit

Used on the 40" & 60" wand extensions and 86" high-pressure spray wand. Allows for 180° travel of spray tip, use in conjunction with the Reverse-A-Clean™ housing and tip.



Spray Accessories

Graco XHD Reverse-A-Clean™ Housing

Heavy-duty Reverse-A-Clean™ air-less spray tip housing assembly. Fits standard Reverse-A-Clean™ tips and standard spray gun fittings.



SA-08260

Graco XHD Tip/Housing Seal Kit

Replacement seals for XHD tip and Guard.

(5)/pack

SA-08263



Graco XHD Heavy-Duty Reverse-A-Clean™ Air-less Spray Tip

The first number indicates the pattern width. This number is then doubled indicating the width of the spray pattern when held 12" away from wall. The second set of numbers indicates the orifice diameter. This number determines the rate of atomization, which can affect drying times and coverage rates.

SA-08273 XHD Reverse-A-Clean Tip #631
SA-08275 XHD Reverse-A-Clean Tip #635
SA-08279 XHD Reverse-A-Clean Tip #639
SA-08282 XHD Reverse-A-Clean Tip #727
SA-08283 XHD Reverse-A-Clean Tip #731
SA-08285 XHD Reverse-A-Clean Tip #735
SA-08287 XHD Reverse-A-Clean Tip #739



Contains 1 tip
and 1 seal



Water-based Tip Recommendations:

Tip #631-635, #731, #735 - Mar-flex 5000 WB
or QuickSeal WB
Tip #727, #731 - Dampproofing WB

Solvent-based Tip Recommendations:

Tip #635, #735 - Mar-flex 5000 SB or QuickSeal SB
Tip #727, #731 - Dampproofing SB

Spray Accessories

Spray Gun Swivel

Swivel designed for convenience and comfort of applicator. Alleviates kinks in hoses. Female end fits standard spray gun.

SA-08300



"Z" Spray Gun Swivel

"Z" spray gun swivel designed for ease of application and comfort of applicator's wrist and arms. Alleviates kinks in hoses by rotating 360° both horizontally and vertically.

SA-08310



Spray Wand Adapter

Spray wand tip adapter with a 7/8" thread.

Used to convert the 86" spray wand for use with a Reverse-A-Clean™ housing and spray tip.

SA-08320



3/8" High-Pressure Ball Valve

SA-08340 3/8" female pipe thread.

SA-08340



Spray Hoses

3/8" X 25' Hose

Replacement hose for Mar-flex spray equipment excluding the Hydra M 4000.

3/8" inside diameter by 25' high-pressure airless hose with 1/2" male JIC to 3/8" male pipe.



SA-08400

3/8" X 25' Hose with Insulation and Abrasion Sleeve

Replacement hose for Mar-flex spray equipment excluding the Hydra M 4000.

3/8" inside diameter by 25' high-pressure airless hose with 1/2" male JIC to 3/8" male pipe, insulation and protective abrasion sleeve.



SA-08410

3/8" X 50' Hose

Replacement hose for Mar-flex spray equipment excluding the Hydra M 4000. 3/8" inside diameter by 50' high-pressure airless extension hose with 3/8" male and female quick disconnects.



SA-08420

Spray Hoses

1/2" X 125' Hose

Replacement hose for Mar-flex spray equipment excluding the Hydra M 4000. 1/2" inside diameter by 125' high-pressure airless hose with 1/2" male pipe to 1/2" female JIC.



SA-08440

Hose Insulation

150' of hose insulation. Helps maintain proper temperature of product. Fits all of our spray hoses available from Mar-flex, use in conjunction with abrasion sleeve.



SA-08460

1/2" X 125' Hose with Insulation and Abrasion Sleeve

Replacement hose for Mar-flex spray equipment excluding the Hydra M 4000. 1/2" inside diameter by 125' high-pressure airless hose with 1/2" male pipe to 1/2" female JIC, insulation and protective abrasion sleeve.



SA-08450

Abrasion Sleeve

250' of abrasion sleeve. Use in conjunction with hose insulation, protects hose from job site damage.



SA-08470

Spray Hoses

3/8" X 50' Hose with Insulation and Abrasion Sleeve

Replacement hose for Mar-flex spray equipment excluding the Hydra M 4000. 3/8" inside diameter by 50' high-pressure airless extension hose with 3/8" male and female quick disconnects, insulation and protective abrasion sleeve.



SA-08430

Hydra M 4000 Hoses

3/8" X 25' Hose with Insulation and Abrasion Sleeve - High-Pressure

Hydra M 4000 replacement hose. 3/8" inside diameter by 25' 5,000 psi airless hose with 1/2" male JIC to 1/2" male pipe, insulation and protective abrasion sleeve. Designed to be used with Hydra M 4000.



SA-08415

1/2" X 125' Hose with Insulation and Abrasion Sleeve - High-Pressure

Hydra M 4000 replacement hose. 1/2" inside diameter by 125' 5,000 psi airless hose with 1/2" male pipe to 1/2" female JIC, insulation and protective abrasion sleeve. Designed to be used with the Hydra M 4000.



SA-08455

Spray Hose Connectors

Quick Disconnect Female

Quick disconnect female to be used in conjunction with quick disconnect male.

SA-08500 3/8"
SA-08520 3/4"



SA-08500 SA-08520

3/8" Male Pipe to 3/8" Male Pipe Connector

Connects 3/8" quick disconnect male to 3/8" ball valve.



SA-08555

Quick Disconnect Male

Quick disconnect male to be used in conjunction with quick disconnect female.

SA-08510 3/8"
SA-08530 3/4"



SA-08510 SA-08530

1/4" Female Pipe to 3/8" Male Pipe

Connects 1/4" end of 86" spray wand to 3/8" ball valve.



SA-08565

Female JIC to Male Pipe Connector

Connects spray gun swivel to standard spray gun.

1/4" Female JIC to 3/8" Male Pipe



SA-08550



Questions?
Call Mar-flex Today!

800 498 1411

Material Handling

Maintenance Items

Complete Transfer Pump Utilizing Parts

- 1:1 Transfer Pump MH-16200
- 3/4" Quick Disconnect Female SA-08520
- 24" Transfer Pump Hose MI-12520



GRACO 1:1 FAST FLO® Pump Air Rebuild Kit

Rebuild kit for air motor unit. Includes seals and gaskets.

MI-12500



GRACO 1:1 FAST FLO® Transfer Pump Lower- Rebuild Kit

Rebuild kit for lower unit. Includes seals and gaskets.

MI-12510



55 Gallon Drum Band Heater

120V, 3" wide heater that wraps around a 55 gallon metal drum, includes a 6' three prong power cord and a built-in thermostat with temperature range settings of 50° to 400° F.



MH-16310

SpeeFlo® S5 Spray Gun Repair Kit

Designed for repairing spray gun when seepage of material occurs and springs are weakened. Tungsten carbide ball valve and seat replacement.

MI-12620



SpeeFlo® S5 Spray Gun Repack Tool

Assists in installing gun repair kit (MI-12620). Sleeve protects packings on needle, allowing seals to slide in.

MI-12625



Heavy-Duty Drum Heater

120V metal drum band heater. Equipped with two thermostat ranges that include three wattage settings, a spring loaded toggle clamp to snugly fit drum, and a 6' power cord with a three prong plug for grounded electrical operation.

MH-16320



55 Gallon Drum Blanket

Designed to maintain heat during transport to jobsite. Recommended for Water-based and Solvent-based products.

MH-16325



Safety & Protective Equipment

Hooded Coverall

Hooded coverall, durable, breathable protection with elastic arm and leg bands.

25/box

S/PE-56150L (Large)

S/PE-56150XL (Extra Large)

S/PE-56150XXL (Extra-Extra Large)



Shoe Covers

One size fits most, slips easily over shoes. Prevents tracking of material onto clean floors. Excellent for crack repair.

50/box

S/PE-56175



Particulate Respirators

Particulate respirator is NIOSH certified under CFR84 regulation to have filter efficiency level of 95% or greater against particulate aerosols free of oil. Up to 10X PEL. Exhale valve lets workers breathe easy and stay cool.

10/box



S/PE-56400

Double Dipped PVC Gloves

Double dipped PVC gloves provide protection from solvents, resins, paints and dyes.

12 pair/pack



S/PE-56300

PVC Gloves

Inexpensive, multi-use, general purpose utility gloves with full plastic coating over the entire palm providing enhanced protection and longer wear.

12 pair/pack.

S/PE-56305



Applicator Items

Wet Mil Gauge

Standard measuring tool for gauging proper thickness of spray-applied membranes.

10/pack

AI-28110



BreakAway Knives

Disposable knives, great for cutting drainage board. Just BreakAway blade as needed to obtain a new cutting edge.

25/box

AI-28130



Safety & Protective Equipment

**Complete respirator utilizing parts
8000 Respirator Face Piece S/PE-56410,
Organic Vapor Cartridge S/PE-56415,
P-100 Particulate Filter S/PE-56420 and
Hepa Piggy Back Adaptor S/PE-56425.**



P-100 Particulate Filter

P-100 particulate filter protects against dusts, fumes, mists, radio nuclides, radon daughters and asbestos containing dusts and mists.

5 pair/box



8000 Respirator Face Piece

Soft, durable half face piece conforms to the contour of your face.



Hepa Piggy Back Adaptor

Hepa piggy back adaptor.

5 pair/box



Organic Vapor Cartridge

Organic vapor cartridge.

5 pair/box

S/PE-56415



S/PE-56425



Freight Information/Credit Terms/Return Policy

Order / Freight Information

Regardless of order size, we will always locate the best shipping terms to meet your timing and delivery requirements. You may use your own delivery service as well. Just notify our shipping department for details.

Mar-flex uses various shipping methods to best serve your transportation needs.

Credit Terms & Conditions

Credit Terms are Net 30 subject to approval (unless otherwise noted). Any amount remaining unpaid after such date will incur a service charge of 1.5% (monthly) on the unpaid balance, until paid in full, plus any and all collections costs and attorney fees incurred to collect unpaid balances.

Sales and/or use taxes will be collected where applicable to current tax regulations. The collection of sales and/or use taxes is subject to change in order to comply with state regulations. All orders are subject to acceptance.

Every effort has been made to ensure the accuracy of the information contained in this catalog. Because of our constant efforts to offer the very best products, we reserve the right to change product specifications and/or prices without notice.

All credit card transactions, including payments on accounts, will incur a 3% service charge.

Return Policy

We will normally accept returned products under the following conditions:

- Prior written authorization including RGA number from Mar-flex Waterproofing Products is obtained.
- Products must be returned within 30 days from the original date of the invoice.
- Products must be in new and saleable condition.
- Products must be normal stock for us (not special or custom order).
- A 25% restocking fee plus return freight costs will be deducted from any credit.
- Returns are not accepted on electrical replacement parts.

F.O.B. Carlisle, Ohio 45005



ORDER FORM

COPY and FAX or EMAIL to
FAX: 513-422-7282 or email: info@mar-flex.com

OR CALL TOLL FREE

1-800-498-1411

Office Hours: Monday-Friday 8:00 a.m. - 5:00 p.m. E.S.T.
Shipping/Receiving Hours: Monday-Friday 8:00 a.m. - 4:00 p.m. E.S.T.

1. SOLD TO:		2. SHIP TO: (If different than #1)		
Company Name:		Company Name:		
Street Address:		Street Address:		
City/State/Zip:		City/State/Zip:		
Phone:		Phone:		
Buyers Name/Title:				
Quantity	Item #	Item Description	Unit Price	Total Price
SHIPPING POLICY			Subtotal	
Your order is shipped from the nearest Mar-flex location or dealer. However, should your order exceed size or weight limits, "Common Carrier" (LTL) will be selected and generally has a 48hr turnaround. Back ordered items to ship F.O.B. from origin at customer's expense.			Tax	
RUSH SHIPMENTS/SPECIAL INSTRUCTIONS			Shipping	Call for options & amounts
Please request Next Day Air, 2nd or 3rd Day, preferred truck line, or special instructions. We will promptly take care of your needs.			Total Amount	

CREDIT TERMS & CONDITIONS

Credit Terms are net 30 subject to approval (unless otherwise noted). Any amount remaining unpaid after such date will incur a service charge of 1.5% (monthly) on the unpaid balance, until paid in full, plus any & all collection costs & attorney fees incurred to collect unpaid balances.

Sales and/or use taxes will be collected where applicable to current tax regulations. The collection of sales and/or use taxes is subject to change in order to comply with state regulations. All orders are subject to acceptance.

Every effort has been made to ensure the accuracy of the information contained in the Mar-flex catalog. However, because of our constant efforts to offer you the very best products we must reserve the right to change product specifications & prices without notice.

F.O.B. Carlisle, Ohio 45005

Return Policy

We will normally accept returned products under the following conditions:

- Prior written authorization including RGA number from Mar-flex is obtained
- The products are returned within 30 days from the original date of the invoice
- The products are in new & saleable condition
- The products are normal stock for us (not special or custom order)
- A 25% restocking fee plus freight will be added on all returns
- Returns not accepted on electrical replacement parts.

Mar-flex uses a variety of shipping methods to best suit your transportation needs.



Waterproofing
and Building
Products



Mar-flex offers the best waterproofing products in the industry.

Mar-flex® Waterproofing & Building Products

We are a USA family-owned innovative manufacturer of residential and commercial foundation waterproofing, air barriers and related basement products. We offer unsurpassed quality and reliability with time tested solutions for the building industry.

Everything you need to do the job right

Mar-flex goes the extra step to help you from start to finish with an array of products and accessories, egress and non-egress window wells, perimeter drainage, telescopic vents and control-joints. Architects and Contractors alike can rely on Mar-flex for:

- Industry leading warranties
- Hands-on training right in your area
- Job site support
- Sales support to help your market
- LEED certifications
- Specifications and CAD details, available at Mar-flex.com

Mar-flex guarantee

Mar-flex guarantees quality and versatility — delivering solutions that go above and beyond what you would normally expect. Mar-flex offers a full range of products to perform the job from start to finish. All Mar-flex products are backed by warranties because we stand behind our manufacturing process.

Complete waterproofing systems

Mar-flex has set the industry standard for offering superior water-based and solvent-based waterproofing membranes, an extensive “green” product assortment, and a wide range of drainage and insulation boards to complete the job based on your markets’ needs.



Printed on recycled paper

Try the complete line of Mar-flex Residential and Commercial products:

**Foundation Waterproofing Products | Foundation Products | Concrete Repair
Concrete Anchor Epoxies | Drainage Boards | Egress Window Wells | Standard Window Wells
Sealers/Mastics | Control Joint Systems | Vortex Vents | Contractor Supplies**

Order Today! Contact Mar-flex for the dealer nearest you. 800-498-1411 | 513-422-7285 | Fax 513-422-7282 | Mar-flex.com

©2021 Mar-flex Waterproofing & Building Products. All rights reserved. 2021

Lit Item #Cat1
2000 - 3/2021 AP