



Exterior Below-Grade Commercial Bentonite Waterproofing System

ArmorClay WaterStop

Description

ArmorClay WaterStop is a multilayered bentonite-based waterstop for construction joints. The self-sealing properties of bentonite are encased within a hydration resistant core providing both extreme free swell properties as well as delayed swell properties. The multilayered structure with polypropylene fabric and strong tear-resistant netting provides for additional strength and structure. ArmorClay WaterStop will provide superior performance over the life expectancy of the structure.

Uses

ArmorClay WaterStop is used to seal static construction joints in concrete footings, walls, floors, tunnels, parking and plaza decks and to prevent water migration. ArmorClay WaterStop has superior performance when used under conditions of extreme water head.

Installation

Examine all surfaces prior to starting application. Dust may be present; however all debris and standing water should be removed. Installation may proceed on uncured, damp or frozen surfaces. If surface is troweled smooth, lay a $\frac{1}{8}$ " to $\frac{1}{4}$ " bead of ArmorClay Mastic Adhesive along the joint. If surface is irregular, knock down protrusions greater than $\frac{1}{2}$ " and use ArmorClay Mastic Adhesive to fill the voids. Press ArmorClay WaterStop into uncured Adhesive and nail every 15" (38 cm) o.c. with powder-actuated or hand-driven concrete nails (1" or 2.54 cm shank) with washer ($\frac{5}{8}$ "- $\frac{13}{16}$ " or 15-23 mm). Butt ends for a continuous application. For specific installation guidelines, please contact our distributor, a Mar-flex Representative, or visit our website at www.mar-flex.com for details.

Packaging

$\frac{1}{2}$ " X 1" 15' or $\frac{3}{4}$ " X 1" X 15' standard rolls.

Storage

Protect from moisture. Store on skid or pallet, cover with polyethylene or tarp.

Availability

Available nationwide through Mar-flex distributors. Contact us for details.

Limitations

Keep ArmorClay WaterStop dry, protect from exposure to the elements. ArmorClay WaterStop is resistant to many contaminants in soil. Please contact Mar-flex for compatibility testing. ArmorClay WaterStop should be installed at least 2" from the face of the concrete.

Limited Warranty

Mar-flex Products warrants its products will be delivered free of defects in materials and workmanship. Mar-flex will replace the material or refund the purchase price. Mar-flex makes no other warranty, including an implied warranty of merchantability or fitness for a particular purpose. Mar-flex shall not be liable for any other loss or damage. Contact Mar-flex to discuss specific details for extended warranty periods.

HEALTH AND SAFETY INFORMATION IS GIVEN IN THE SAFETY DATA SHEET (SDS) AND THE PRODUCT DATA SHEET AVAILABLE FOR THIS PRODUCT. THESE SHOULD BE READ AND UNDERSTOOD BEFORE USING THIS PRODUCT.

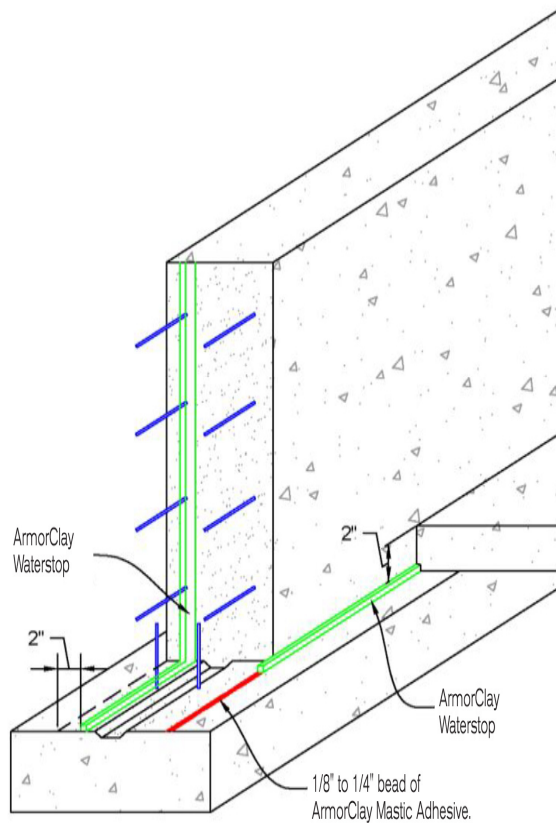


Exterior Below-Grade Commercial Bentonite Waterproofing System

ArmorClay WaterStop

ArmorClay WaterStop Typical Installation

Use ArmorClay WaterStop on vertical and horizontal construction joints with 2" of containment. ArmorClay Mastic Adhesive will fill voids in rough concrete and provides additional adhesion to the concrete while preventing water or concrete from seeping under the ArmorClay WaterStop. See Figure below.



ArmorClay WaterStop Typical Physical Properties		
Property	Method	Results
Weight		0.25 lb per linear foot (0.4 kg/m)
Tear Strength: Membrane	ASTM D1004	1/2": 75 lbs (333 N) 3/4": 112 lbs (500 N)
% Elongation at break Unrestricted Expansion	ASTM D638	>150%*
Unrestricted Expansion		300% over 4 days
Installation Temperatures Freeze/thaw cycles	ASTM D746	1-15°F to 120°F (-25°C to 50°C) No effect before or after installation.
Resistance to hydrostatic head	ASTM D751 Procedure A	100 ft. (30 m) of water
Vapor Permeability	ASTM D5084	1 x 10 ⁻⁹ cm per sec