



**WATERPROOFING &
BUILDING PRODUCTS**



**COMMERCIAL
PRODUCT**



EXTERIOR ABOVE AND BELOW-GRADE COMMERCIAL SHEET WATERPROOFING SYSTEM

ArmorSheet™ 600 / 601





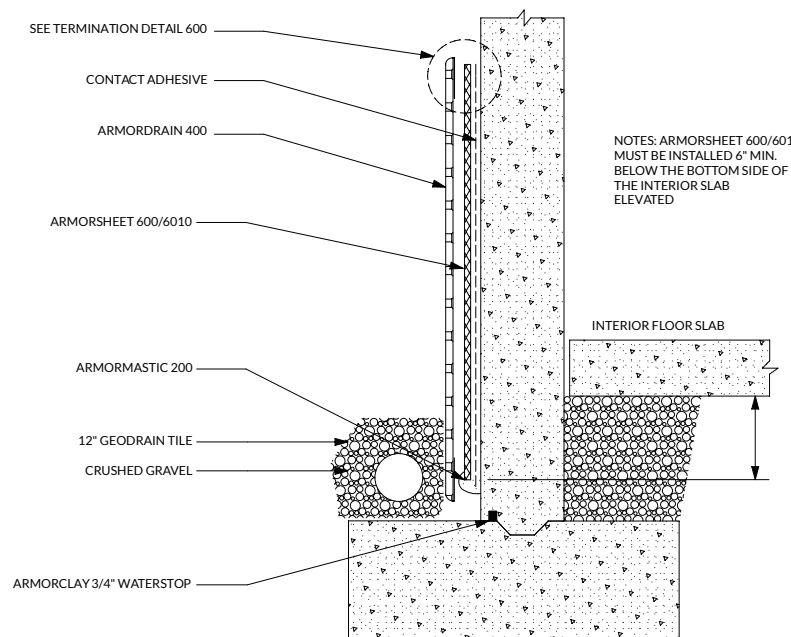
Use ArmorSheet with Mar-flex commercial grade waterproofing products for unmatched protection and superior warranties.

Why Self-Adhering Asphalt Sheets?

ArmorSheet™ products and accessories are a tested and proven solution for commercial waterproofing applications. This peel-and-stick waterproofing membrane is easy to handle, simple to apply and provides long-lasting protection. With all the benefits of factory-controlled properties and the waterproofing characteristics of asphalt, ArmorSheet™ is the easy choice for contractors and applicators alike.



Elevated Interior Slab



ADVANTAGES:

- Industry leading product-rigidity gives unparalleled ease of install in tight spaces
- When combined with Armor Primer products, there is no stronger bond in the self-adhering asphalt sheet
- Industry leading Puncture Resistance
- Extensive field testing resulting in a best-in-class product that is available for the first time in the United States

Product Description:

ArmorSheet 600 (summer grade)

is a self-adhering sheet membrane consisting of 56 mils (1.4 mm) of rubberized asphalt laminated to 4 mils (0.1 mm) of polyethylene to form a minimum 60-mil (1.5 mm) membrane. ArmorSheet600 Summer Grade membrane is suitable for installations where the ambient temperature is 40°F (4.4°C) or above.

ArmorSheet 601 (winter grade)

is a self-adhering sheet membrane consisting of 56 mils (1.4 mm) of rubberized asphalt laminated to 4 mils (0.1 mm) of polyethylene to form a minimum 60-mil (1.5 mm) membrane. ArmorSheet601 Winter Grade is suitable for installations where the ambient temperature is 20°F-60° F (-6 to -18°C) or above.



Product Application:

ArmorSheet membranes are used for vertical and horizontal waterproofing on structural foundation walls and decks. Below-grade foundation walls, tunnels, split slabs; plaza decks and parking decks are all areas where ArmorSheet may be applied. ArmorSheet may also be used in interior areas such as mechanical rooms, laboratories, kitchens and bathrooms. The combination of these two excellent waterproofing materials provides a high-performance, extremely durable waterproofing barrier.



ArmorSheet 600/601 (See Product Catalog for complete details on ArmorSheet 600/601 and Accessories)

| Properties | Color | Thickness | Tensile (Membrane) | Tensile (Film) | Elongation | Pereance | Low Temp. Flexibility | Crack Cycling | Peel Strength | Lap Adhesion | Puncture Resistance | Soil Burial at 16 wks | Water Absorption | Hydro-static Head | Thickness | Temp. Application Range | Roll Size |
|------------|-----------------|------------|--------------------|----------------|------------|-------------|-----------------------|---------------|---------------|--------------|---------------------|-----------------------|------------------|-------------------|------------|----------------------------|------------|
| Method | - | ASTM D3767 | ASTM D412 | ASTM D882 | ASTM D412 | ASTM E96 | ASTM D1970 | ASTM C836 | ASTM D903 | ASTM D1876 | ASTM E154 | GSA-PBS 07121 | ASTM D570 | ASTM D5385 | ASTM D3767 | - | - |
| Results | Dark Gray/Black | 60 mils | 796 psi | 2243 psi | 623% | 0.016 perms | Unaffected | Unaffected | 6.0 lb/in | 11.6 lb/in | 89 lb (min) | No effect | 0.18% by wt | 231 ft | 60 mils | AS 600 40°+ AS 601 20°+ | 337'x65.5' |

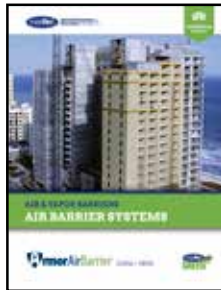


COMPLETE COMMERCIAL SOLUTION

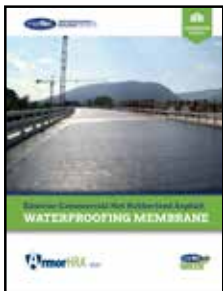
Mar-flex offers the best commercial waterproofing products in the industry.



ArmorClay



ArmorAirBarrier



ArmorHRA



ArmorMasonry Sealer



ArmorSheet



ArmorDrain

ArmorFoam



ArmorMembrane

ArmorBlock

Mar-flex® Waterproofing & Building products

We are a family-owned innovative manufacturer of commercial grade, waterproofing foundation and air barrier products. We offer unsurpassed quality and reliability with time tested solutions for the building industry.

Complete waterproofing systems

Mar-flex has set the industry standard for offering superior water-based and solvent-based waterproofing membranes, an extensive “green” product assortment and a wide range of drainage and insulation boards to complete the job based on your market’s needs.

Visit our website, www.mar-flex.com/armor for more information:

- Detailed Product Sheets
- Detailed Spec Sheets
- Detailed Application Descriptions
- Detailed Installation Guides

Mar-flex Warranty

Mar-flex Waterproofing & Building Products warrants this product to be free of defects in workmanship and materials only at the time of shipment from our factory. If any Armor Series materials prove to contain manufacturing defects that substantially affect their performance, Mar-flex Waterproofing & Building Products will, at its option, replace the materials or refund its purchase price.

This limited warranty is the only warranty extended by Mar-flex Waterproofing & Building Products with respect to its materials. There are no other warranties including the implied warranties of merchantability and fitness for a particular purpose.

Mar-flex Waterproofing & Building Products specifically disclaims liability for any incidental, consequential or other damages including, but not limited to, loss of profits or damages to a structure or its contents arising under any theory of law whatsoever.

The dollar value of Mar-flex’s liability and buyer’s remedy under this limited warranty shall not exceed the purchase price of the Mar-flex Waterproofing & Building Products material in question.



Printed on recycled paper

Try the complete line of Mar-flex products.

Bentonite Clay Waterproofing | Self-Adhering Sheet Waterproofing | Fluid-Applied Waterproofing
 Drainage Mats | Fluid-Applied Dampproofing | Air & Vapor Barriers | Hot-Applied Waterproofing
 Foam Insulation | Masonry Sealer